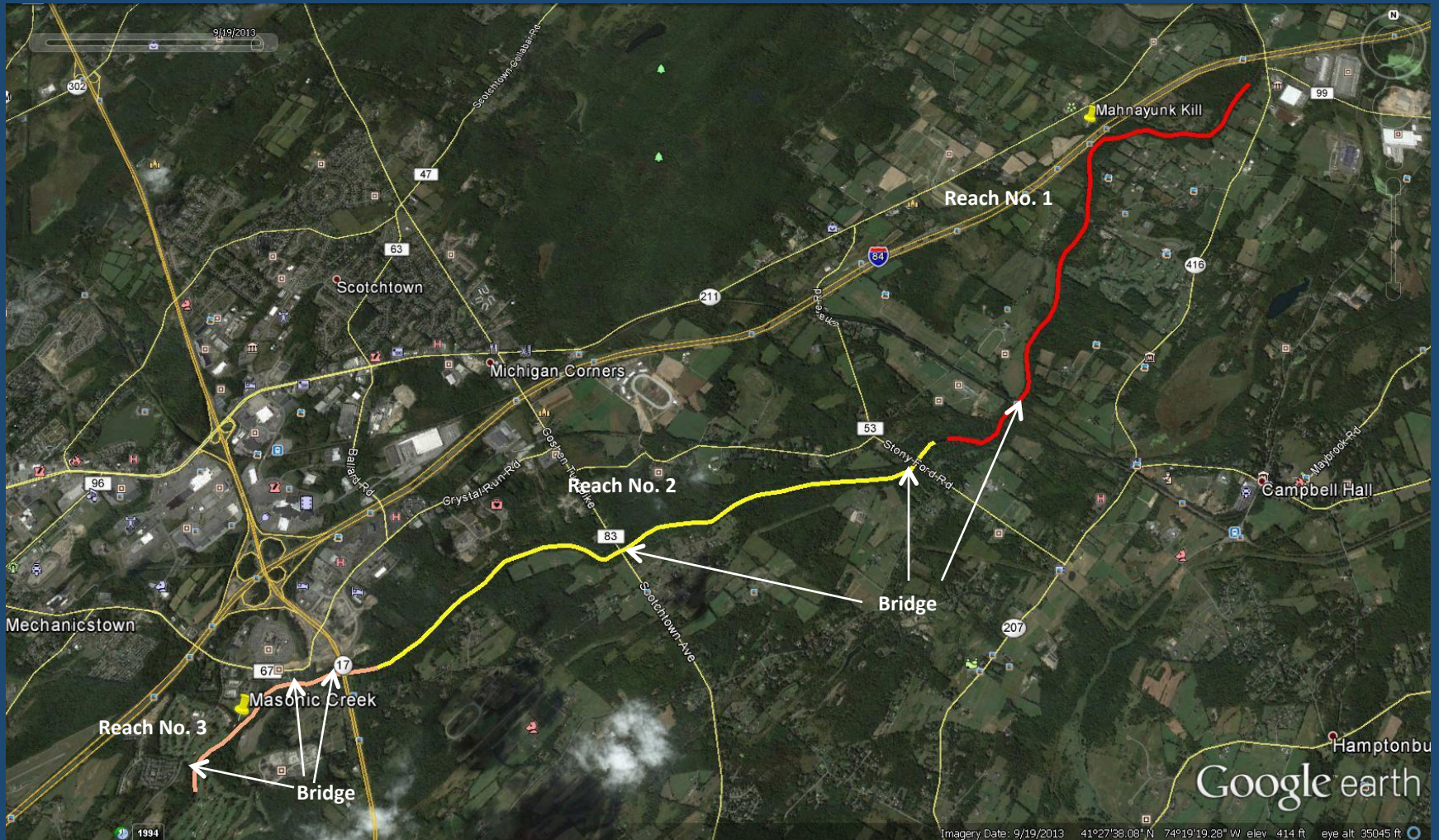




NYRCR
Town of Wallkill
Hydraulic Modeling Baseline

August 26, 2014

Wallkill River - Study Area



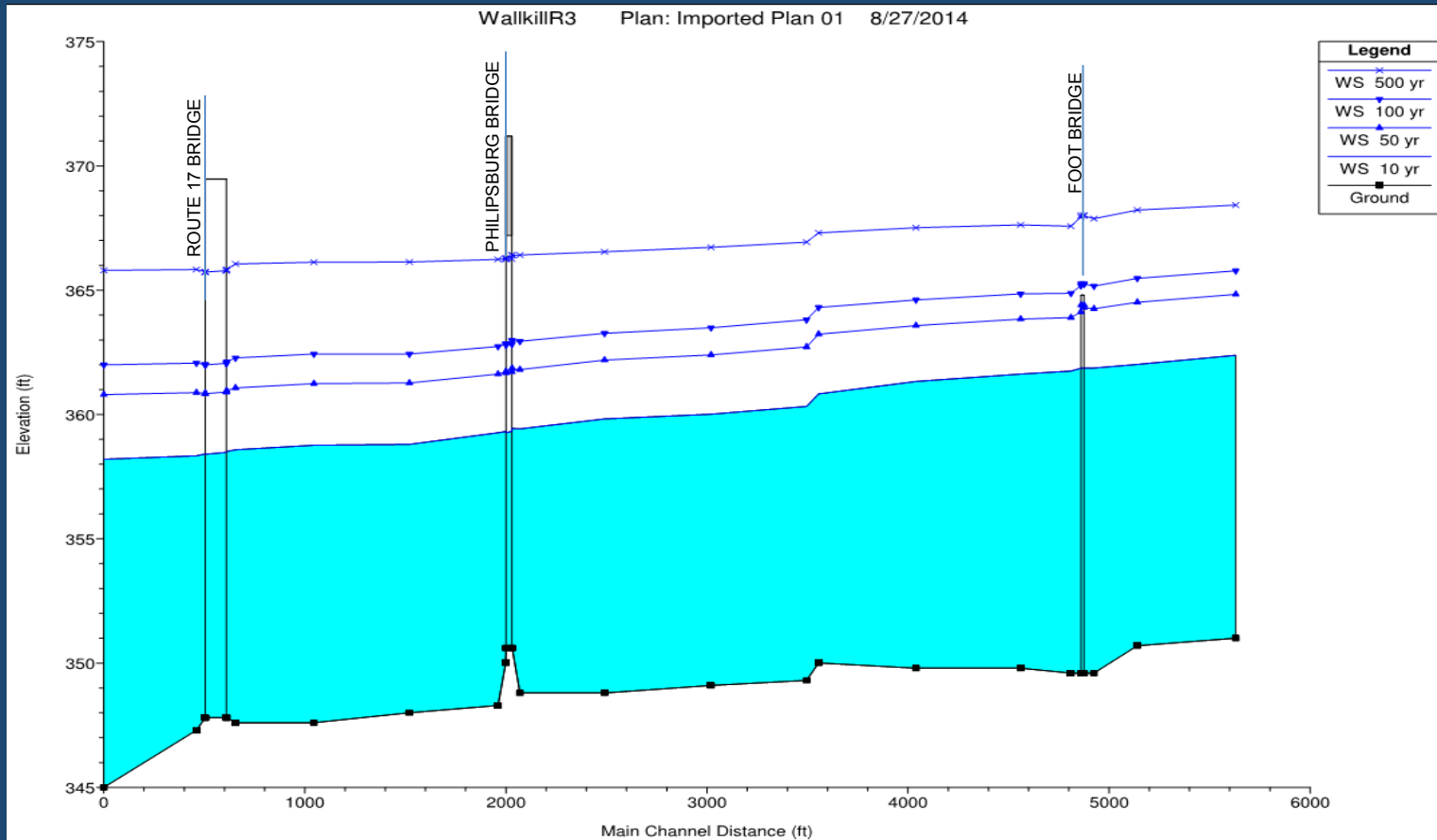
HEC-RAS Model

- Developed by U.S. Army Corps of Engineers
 - Simulate the water flow through a drainage area
- Predict the Water Surface Elevation (WSE) and extents of flooding for a given storm event
 - E.g., 100-year or 1% annual-chance event
- Assess the effectiveness of flood mitigation alternatives
 - Evaluate and compare potential benefits in terms of reduced flooding WSE and extents
- Received previously prepared Hydraulic Models
 - Currently updating and checking accuracy

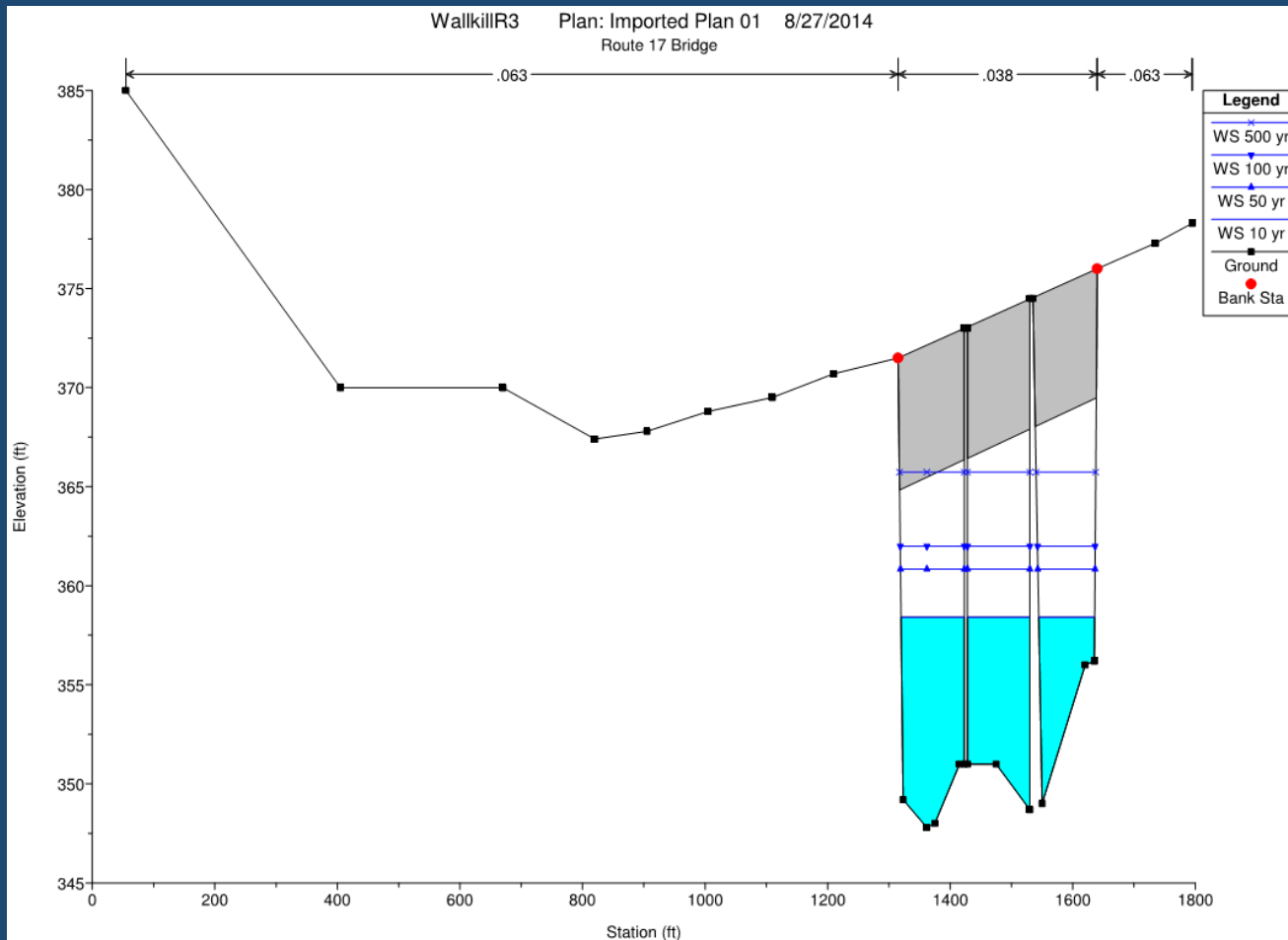
Walkkill Town Study Area– Reach No. 3



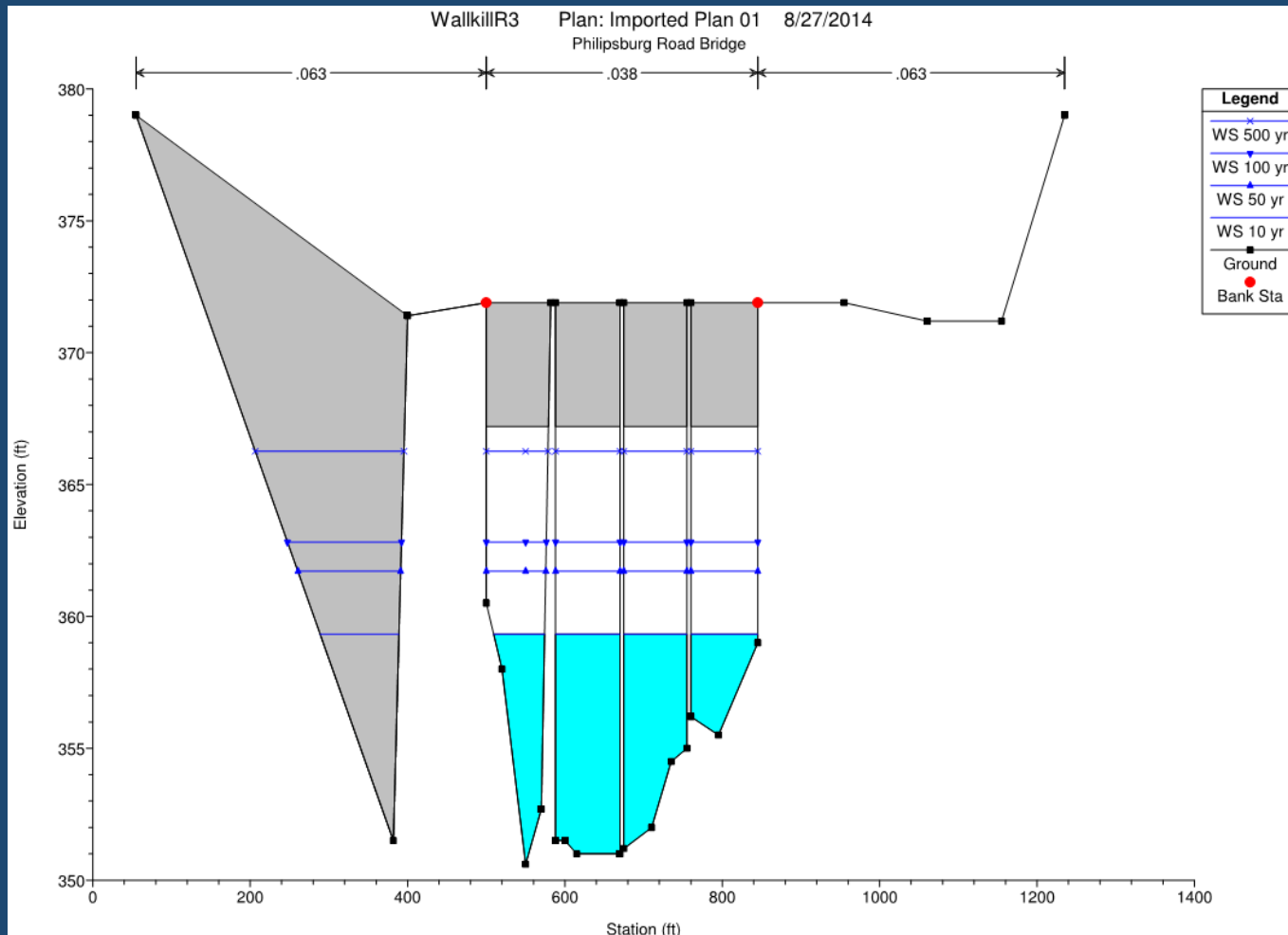
Wallkill Town (Water Surface Profile)



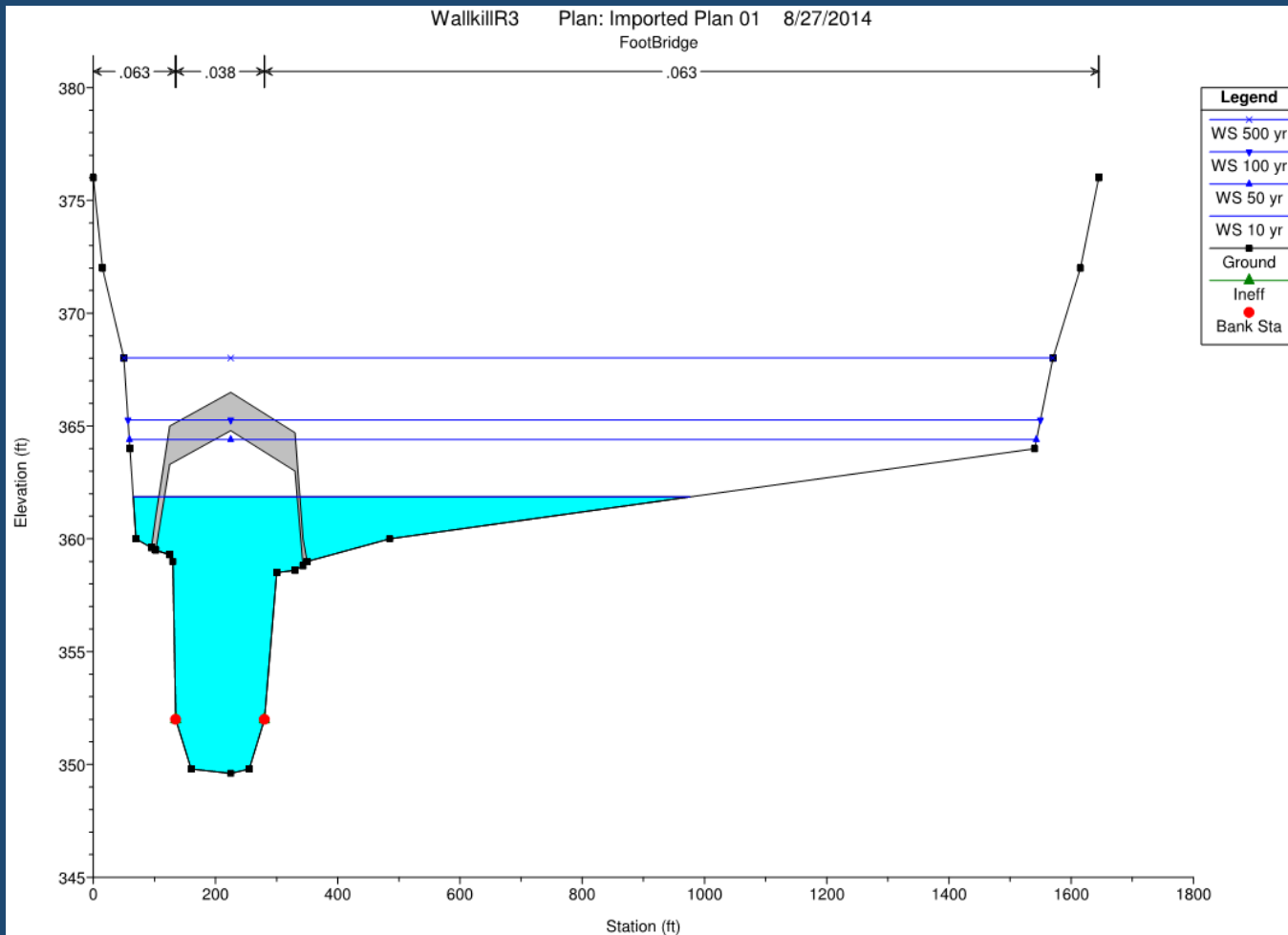
Wallkill River – Route 17 (Cross Section)



Wallkill River – Philipsburg Road (Cross Section)



Wallkill River- Footbridge (Cross Section)



Thank You for Your Attention

Questions?