

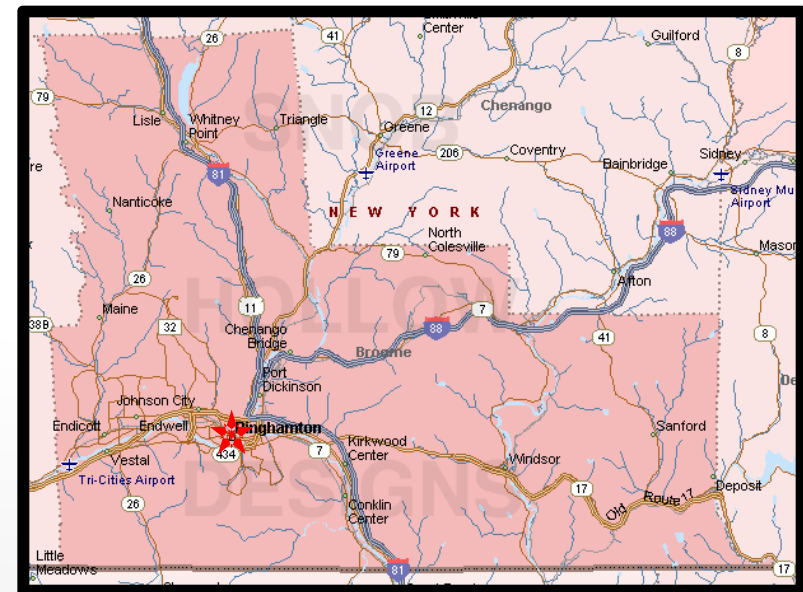
# Union-Endicott HS & Lourdes Hospital Flood Mitigation Projects



presented by: Charles F. "Rick" Woidt, Jr., PE, CFM  
Woidt Engineering & Consulting, P.C.

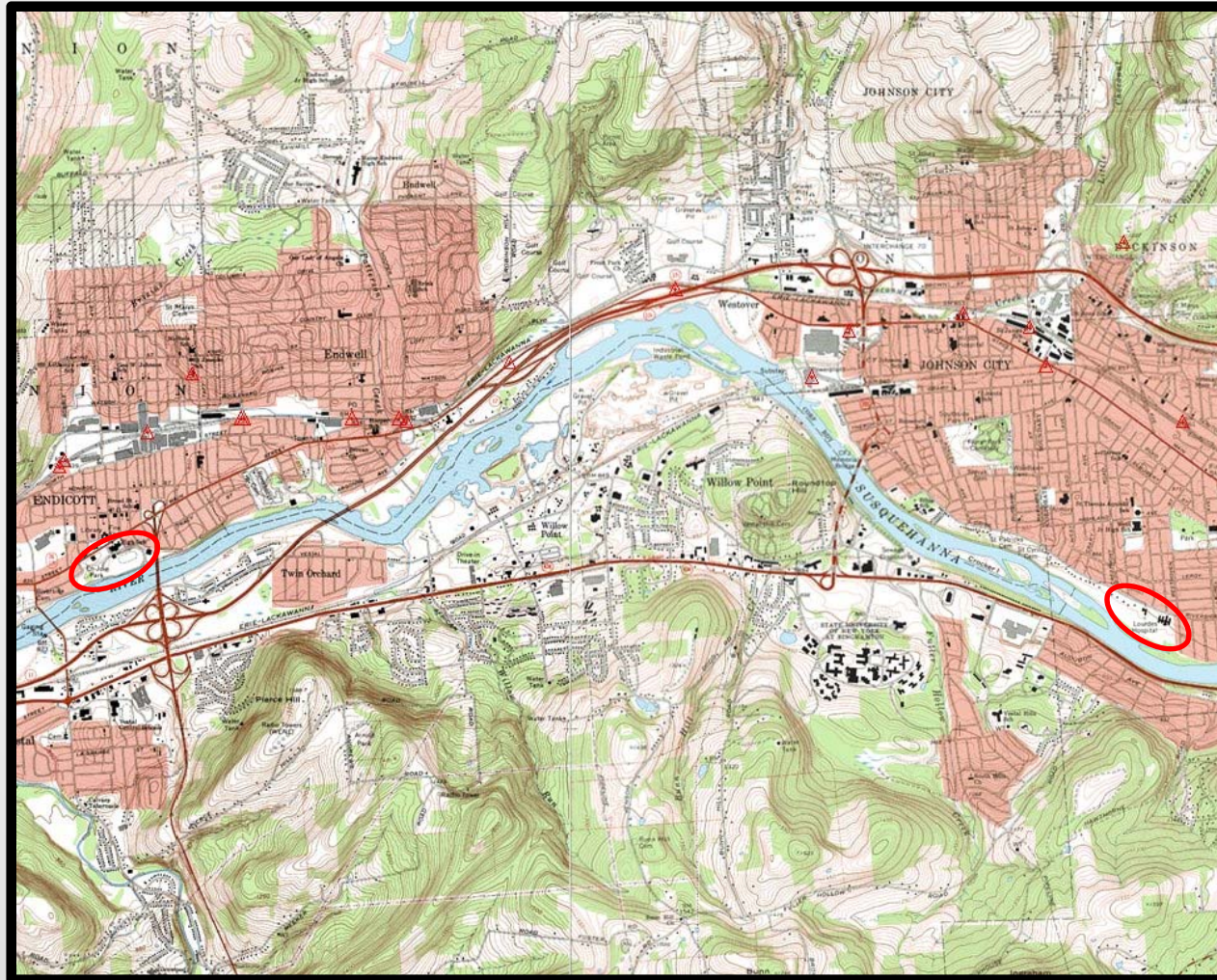


# Project Vicinity/Location Maps





# Project Vicinity/Location Maps





# September 2006 Flood



# September 2011 Flood





# MacArthur Elementary School September 2011



# Union-Endicott High School





# Union-Endicott High School – June 2006





# Union-Endicott High School Flood Protection Project

- ▶ Design/Permitting 2007 and 2008
- ▶ Constructed in Summer and Fall of 2009



# Union-Endicott High School Flood Protection Project

- ▶ Construction completed end of 2009
- ▶ Engineering & Construction Cost = \$4,400,000

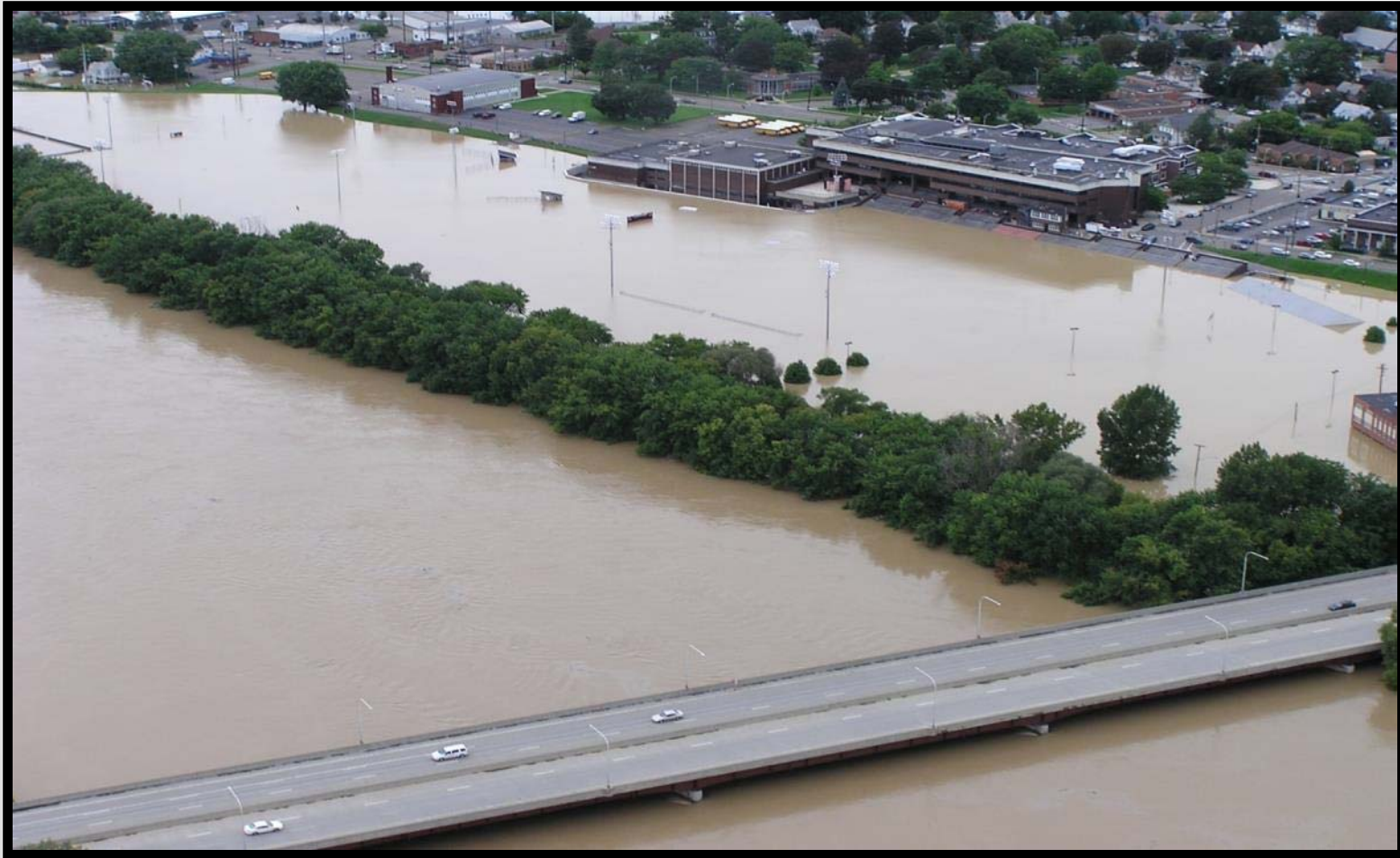




# Union–Endicott High School

- ▶ Concrete T–Wall Design
- ▶ 500–year protection for Critical Facility
- ▶ Interior Stormwater Pumping Provisions
- ▶ Redundant Closure Structures (2)
- ▶ O&M Procedures in place

# Union-Endicott High School September 2011 Flood





# Union-Endicott High School September 2011 Flood



# Union-Endicott High School September 2011 Flood





# Union-Endicott High School September 2011 Flood



# Lourdes Hospital – June 2006





# Lourdes Hospital – June 2006

▶ \$23,000,000 ± of Damage



# Lourdes Hospital Floodwall

- ▶ Design, Permitting 2008 & 2009
- ▶ Construction Completed 2010
- ▶ Construction + Engineering Cost = \$10,000,000±





# Lourdes Hospital Floodwall

- ▶ Concrete T-Wall Design
- ▶ 500-year protection for Critical Facility
- ▶ Interior Stormwater Pumping Provisions
- ▶ Sanitary Pumping Provisions
- ▶ 10 Closure Structures (passive gates)
- ▶ O&M Procedures in place
- ▶ Flood Mitigation zero rise impacts

# Lourdes Hospital – September 2011





# Lourdes Hospital – September 2011



# Lourdes Hospital – September 2011





# Lourdes Hospital – September 2011



# Lourdes Hospital – September 2011





# Lourdes Hospital

- ▶ Floodplain Mitigation Area
- ▶ Zero Rise of Base Flood Elevation



# Why projects were successful

- ▶ Designed to US Army Corps and FEMA Standards
- ▶ Utilized Updated DFIRM Flood Elevations
- ▶ Interior Stormwater Pumping Systems
- ▶ Redundant Closure Structures
- ▶ Access to Site Available During Flood Event
- ▶ O&M Procedures in place
- ▶ Mitigation of Floodplain Impacts



For further information or questions, please contact:

- ▶ Rick Woidt      [RWoidt@WoidtEngineering.com](mailto:RWoidt@WoidtEngineering.com)
- ▶ Dan Griffiths      [Dan@GriffithsEngineering.com](mailto:Dan@GriffithsEngineering.com)

