

USFWS National Wetlands Inventory Map



Legend

— Burma Road

USFWS NWI

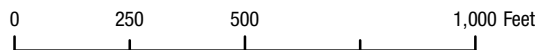
- Estuarine and Marine Deepwater
- Estuarine and Marine Wetland
- Freshwater Emergent Wetland
- Freshwater Forested/Shrub Wetland
- Freshwater Pond
- Lake
- Other
- Riverine

Created: 9/30/2019

Data Sources: Boundaries of Wetlands provided by the USFWS NWI.
<https://www.fws.gov/wetlands/data/data-download.html>

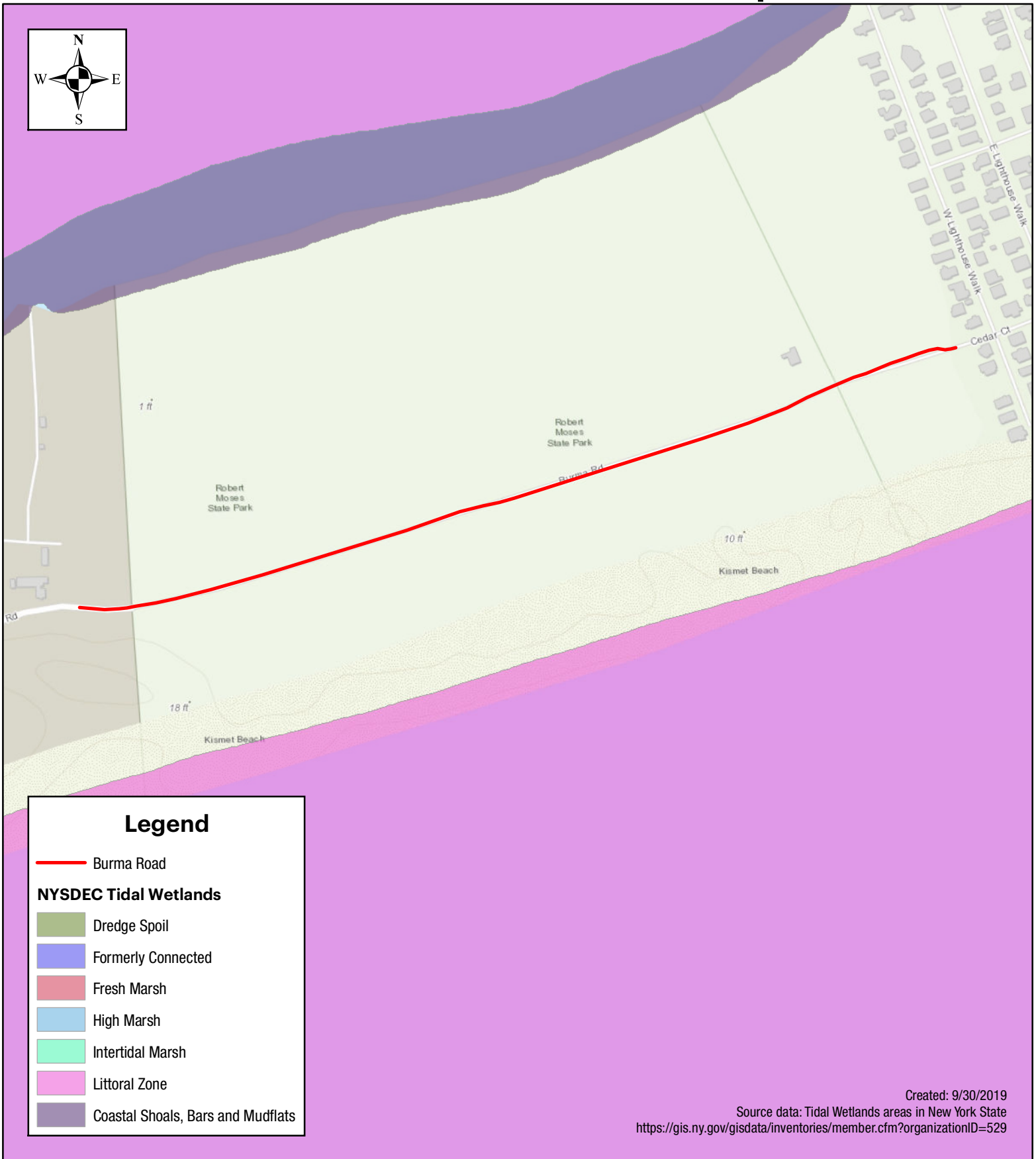


1:5,000



Fire Island National Seashore - Burma Road Repairs Project
Burma Road - East of the NPS Ranger Station
and West of the Hamlet of Kismet
Fire Island National Seashore Park
Suffolk County, New York

NYSDEC Tidal Wetlands Map



Legend

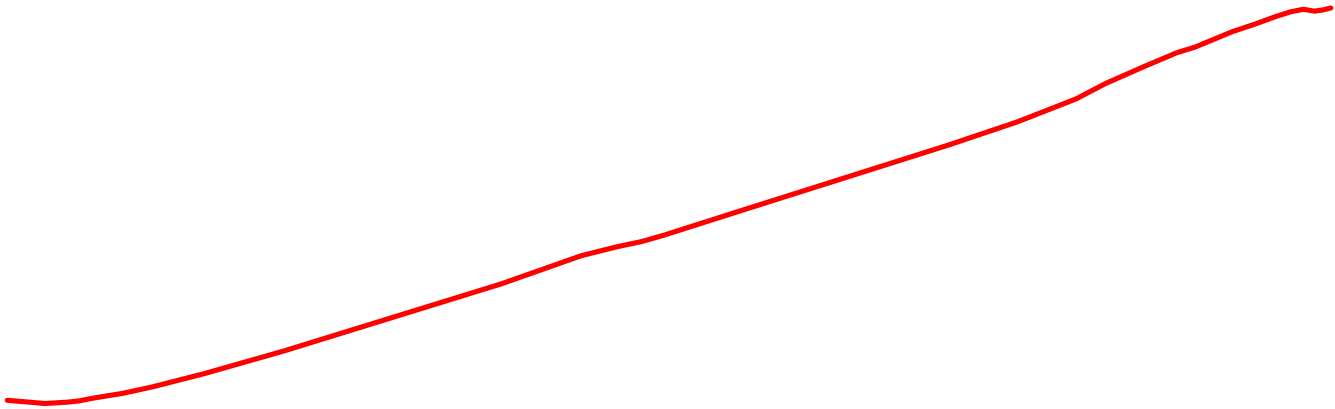
- Burma Road
- NYSDEC Tidal Wetlands**
- Dredge Spoil
- Formerly Connected
- Fresh Marsh
- High Marsh
- Intertidal Marsh
- Littoral Zone
- Coastal Shoals, Bars and Mudflats

Created: 9/30/2019
 Source data: Tidal Wetlands areas in New York State
<https://gis.ny.gov/gisdata/inventories/member.cfm?organizationID=529>








Fire Island National Seashore - Burma Road Repairs Project
Burma Road - East of the NPS Ranger Station
and West of the Hamlet of Kismet
Fire Island National Seashore Park
Suffolk County, New York

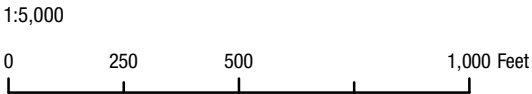
NYSDEC Wetlands and Waterways Map



Legend

-  Burma Road
-  NYSDEC Waterbody Classifications for Rivers/Streams
-  NYSDEC Waterbody Classifications for Lakes
-  State Regulated Freshwater Wetlands
-  State Regulated Wetland Checkzone

Created: 9/30/2019
Data Sources: Boundaries of Wetlands, Wetland Checkzones,
and Classified Waterways provided by the NYSDEC.
<https://gis.ny.gov/gisdata/inventories/details.cfm?DSID=1274>



Fire Island National Seashore - Burma Road Repairs Project
Burma Road - East of the NPS Ranger Station
and West of the Hamlet of Kismet
Fire Island National Seashore Park
Suffolk County, New York