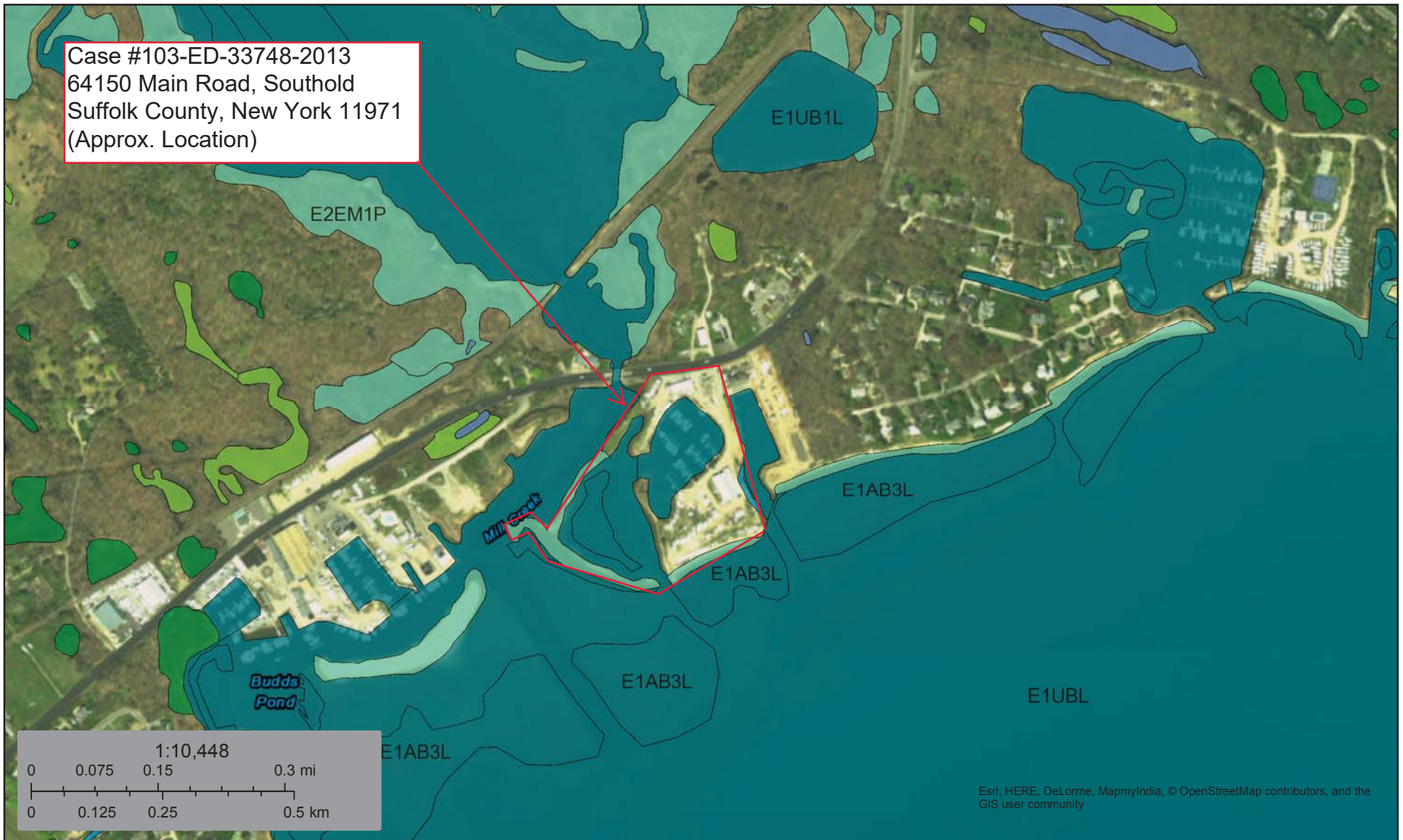




Case #103-ED-33748-2013  
64150 Main Road, Southold  
Suffolk County, New York 11971  
(Approx. Location)



December 29, 2016

- |                                |                                   |          |
|--------------------------------|-----------------------------------|----------|
| Estuarine and Marine Deepwater | Freshwater Forested/Shrub Wetland | Other    |
| Estuarine and Marine Wetland   | Freshwater Pond                   | Riverine |
| Freshwater Emergent Wetland    | Lake                              |          |

This map is for general reference only. The US Fish and Wildlife Service is not responsible for the accuracy or currentness of the base data shown on this map. All wetlands related data should be used in accordance with the layer metadata found on the Wetlands Mapper web site.