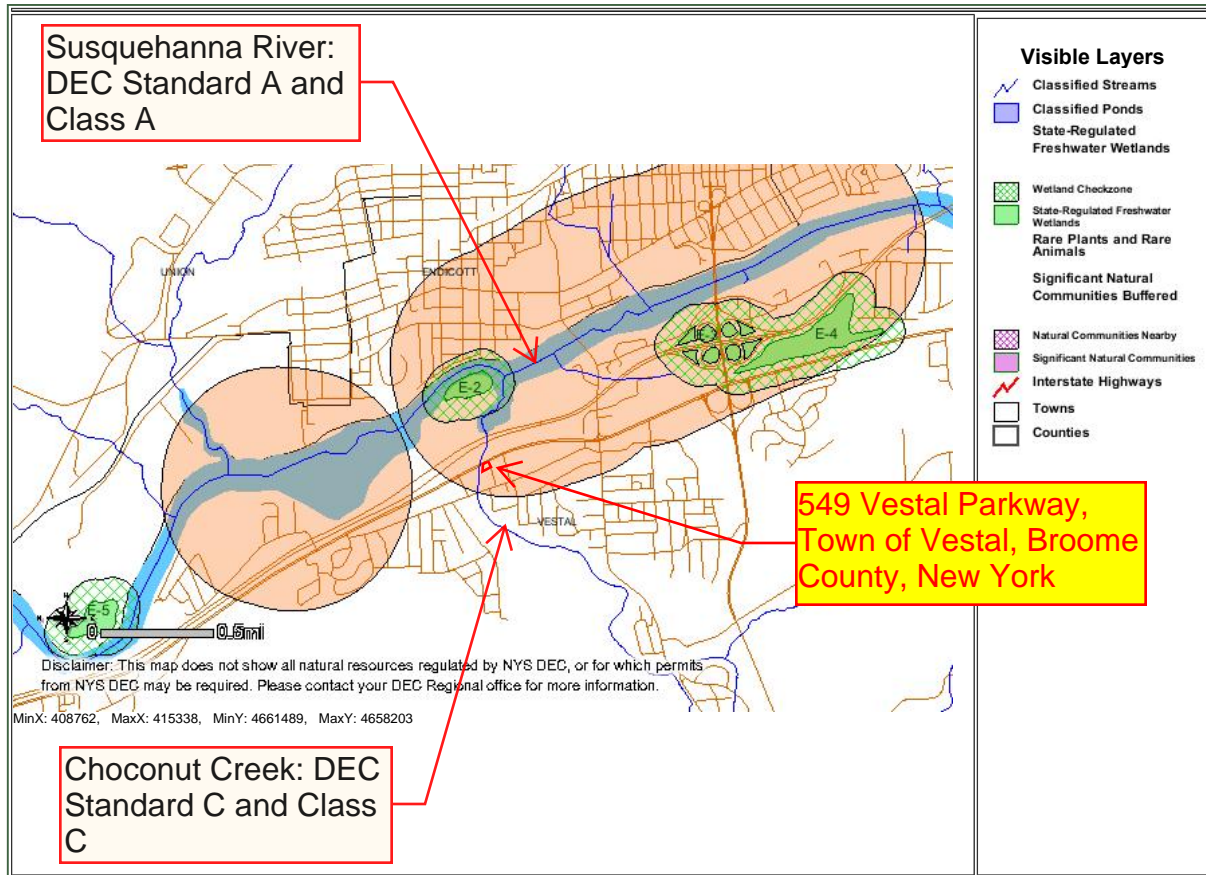


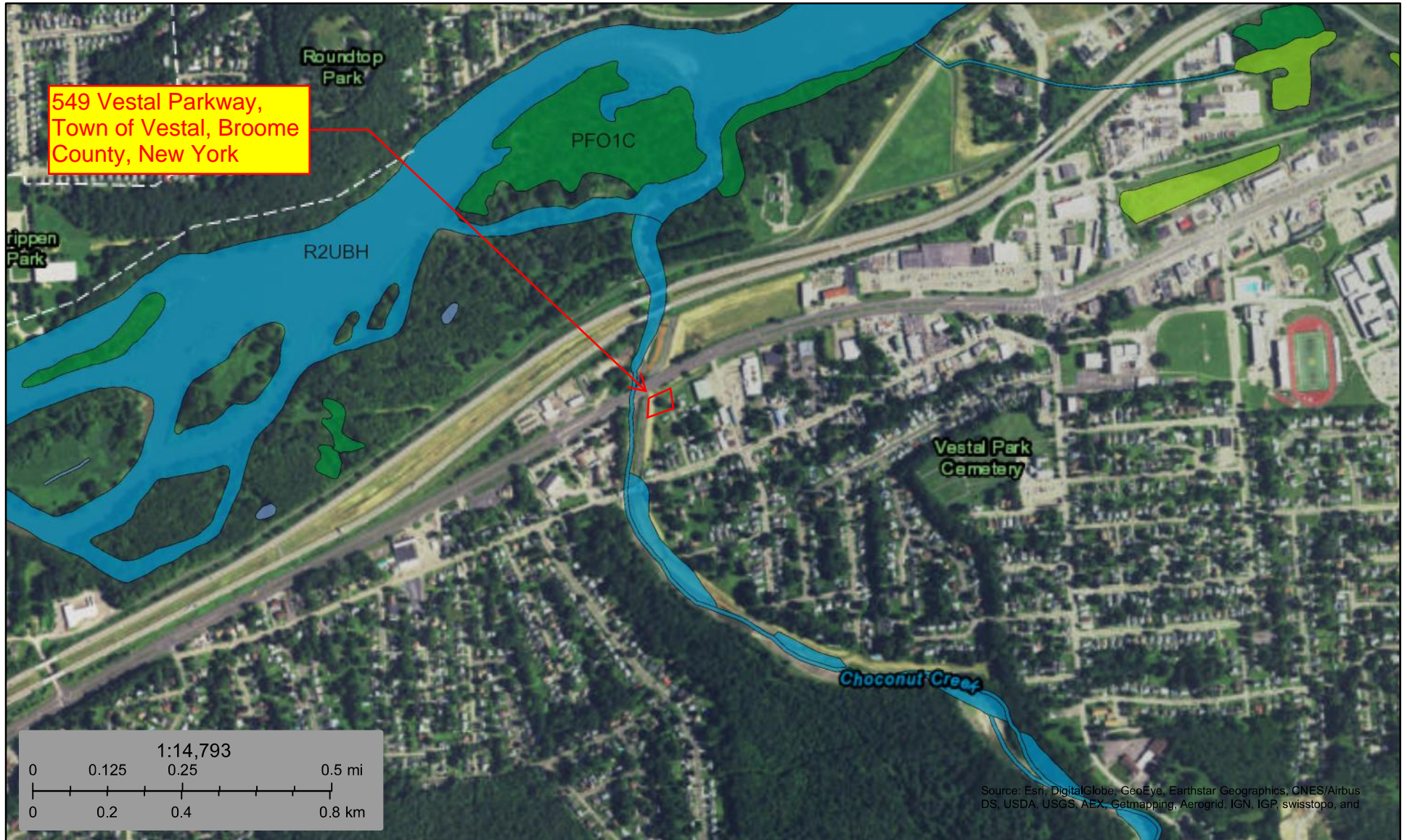
NYSDEC Environmental Resource Map

[print page] [close window]


Please set your printer orientation to "Landscape".



Disclaimer: This map was prepared by the New York State Department of Environmental Conservation using the most current data available. It is deemed accurate but is not guaranteed. NYS DEC is not responsible for any inaccuracies in the data and does not necessarily endorse any interpretations or products derived from the data.



August 9, 2016

- | | | | | | |
|---|--------------------------------|---|-----------------------------------|---|----------|
|  | Estuarine and Marine Deepwater |  | Freshwater Forested/Shrub Wetland |  | Other |
|  | Estuarine and Marine Wetland |  | Freshwater Pond |  | Riverine |
|  | Freshwater Emergent Wetland |  | Lake | | |

This map is for general reference only. The US Fish and Wildlife Service is not responsible for the accuracy or currentness of the base data shown on this map. All wetlands related data should be used in accordance with the layer metadata found on the Wetlands Mapper web site.