



Five Towns Planning Committee Meeting #1

September 12, 2013

Introductions

New York State Planner

- Ian Francis

CR Committee Co-Chairs

- Bob Block
- Pete Sobol

Introductions

Perkins Eastman – Design & Action Strategies

- Eric Fang
- Ayo Yusuf

BFJ Planning – Planning

- Frank Fish
- Simon Kates

Louis Berger Group – Technical Analysis

- Niek Veraart
- Jennifer Gonzalez

Howard/Stein-Hudson – Public Outreach

- Arnold Bloch
- Ryan Walsh

PERKINS EASTMAN | BFJ
IN PARTNERSHIP WITH
THE LOUIS BERGER GROUP

Introductions

Urbanomics - Economics/Assessments

Tidal Basin - Implementation Strategies

dLand Studio - Implementation Strategies

Marsh Risk Consulting - Claims Adjustment Consultant

John V. Waters - Housing Needs Assessments

PACO Group, Inc. - Risk Assessments

Ammann & Whitney - Structural Assessments

VJ Associates - Cost Estimating

PERKINS EASTMAN | BFJ
IN PARTNERSHIP WITH
THE LOUIS BERGER GROUP

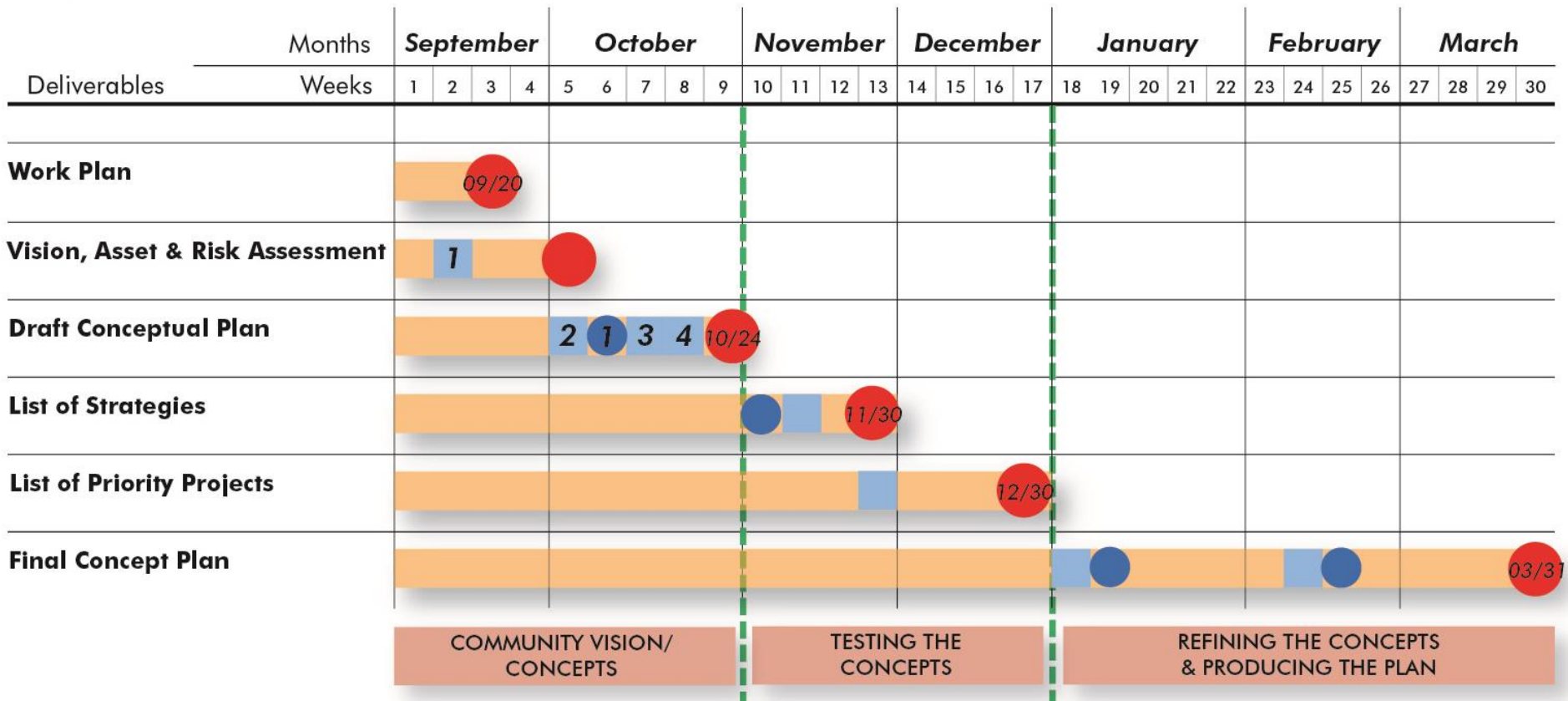
NYRCR Program Schedule

 Planning Committee Meeting

 Public Meeting

 Deliverable Due Date

(icons without dates haven't been set yet)



Community Reconstruction (CR) Plan

Goals for Tonight

Agenda

- Presentation
- Coffee Break
- Discussion / Q&A

Comprehensive Funding Resources

NY Rising Community Reconstruction Program Funds:

- Up to \$27 million allocated for reconstruction projects in the Five Towns CR Area
- Possible additional funds for exemplary public engagement, regional coordination and design innovation.

Additional select federal funds:

- CDBG-DR
- FEMA: Public & Individual Assistance, Hazard Mitigation Grants
- Social Services Block Grants
- Federal Transit Authority & Federal Highway Administration Relief
- Clean Water & Drinking Water State Revolving Fund

Additional select state and city funds:

- NY Smart Home Buyout Program
- NYC Build it Back (CDBG-DR)
- Small Business Matching Grant Program (CDBG-DR)
- NYC Nonprofit Recovery Loan/Grant Program

Understanding the CR Program

New York State Action Plan for Community Development Block Grant Program Disaster Recovery (CDBG-DR)

Approved April 26, 2013

- Outlines \$1.7 billion in supplemental federal HUD funding for housing, infrastructure and business recovery activities for recovery efforts from Hurricane Sandy, Hurricane Irene and Tropical Storm Lee
- Funding flows through the NYS Community Development Block Grant Disaster Recovery (CDBG – DR) Program

www.nyshcr.org/Press/ActionPlan

Building Back Better

- NY State established the New York Rising Community Reconstruction Program
- \$27 million allocated for reconstruction projects in the Five Towns CR Area
- Additional funds will support projects and activities identified in CR Plans
- Competitive funding is also available for the most successful CR Plans across New York State

CR Plan: Improving the Future

The community planning process will address:

Current Damage

- Assess the community's vulnerabilities to potential natural disasters and its needs for economic development.

Future Threats

- Identify where funds should be used to repair or reconstruct critical facilities and essential public assets damaged to or destroyed

Increase Resiliency

- Identify projects that will increase resilience while also protecting vulnerable populations and promoting sound economic development

CR Plan Overview: Focus on the Future

CR Plans will:

- Identify a suite of projects
- Propose how allocated CDBG-DR funds will be used
- Identify other sources of funds and develop a strategy for implementation

Guidance for New York Rising Community Reconstruction Plans



A Planning Toolkit for CR Planning Committees

nysandyhelp.ny.gov

CR Plan: Required Contents

1. Community Overview
2. Community Assessment of Risk and Needs
3. Reconstruction Strategies
4. Implementation Schedule

Community Overview

1. Geographic Scope of Plan
2. Description of Storm Damage
3. Critical Issues
4. Community Vision
5. Relationship to Regional Plans

Geographic Scope of Plan

1. Areas where assets are most at risk
2. Areas in which reconstruction or future construction should be encouraged

Five Towns Proposed Study Area
September 2013

Legend:

- Proposed Study Area
- Parks
- LIRR Stations
- Schools
- Police & Fire
- Hospitals
- Houses of Worship

Map Labels:

- New York City
- JFK Airport
- Rockaway Blvd
- Meadowmere
- Woodmere
- Cedarhurst
- Inwood
- Lawrence
- Atlantic Beach
- South Valley Stream
- Valley Stream
- Hewlett
- Hewlett Bay Park
- Hewlett Harbor
- Hewlett Neck
- Woodsburgh
- Long Beach Expressway
- Long Beach Station
- Island Park Station
- Harbor Isle
- Island Park
- Barnum Isle
- Shell Creek Park
- Westchester
- Rockville Centre
- Oceanside
- Bay Park
- Bay County Park
- Bay Park STP
- The Seawane Club
- East Rockaway
- Centre Avenue Station
- Lynbrook Station
- Gibson Station
- Hewlett Station
- Woodmere Station
- Cedarhurst Station
- Inwood Station
- Far Rockaway Station
- Rockville Centre Station

September 2013

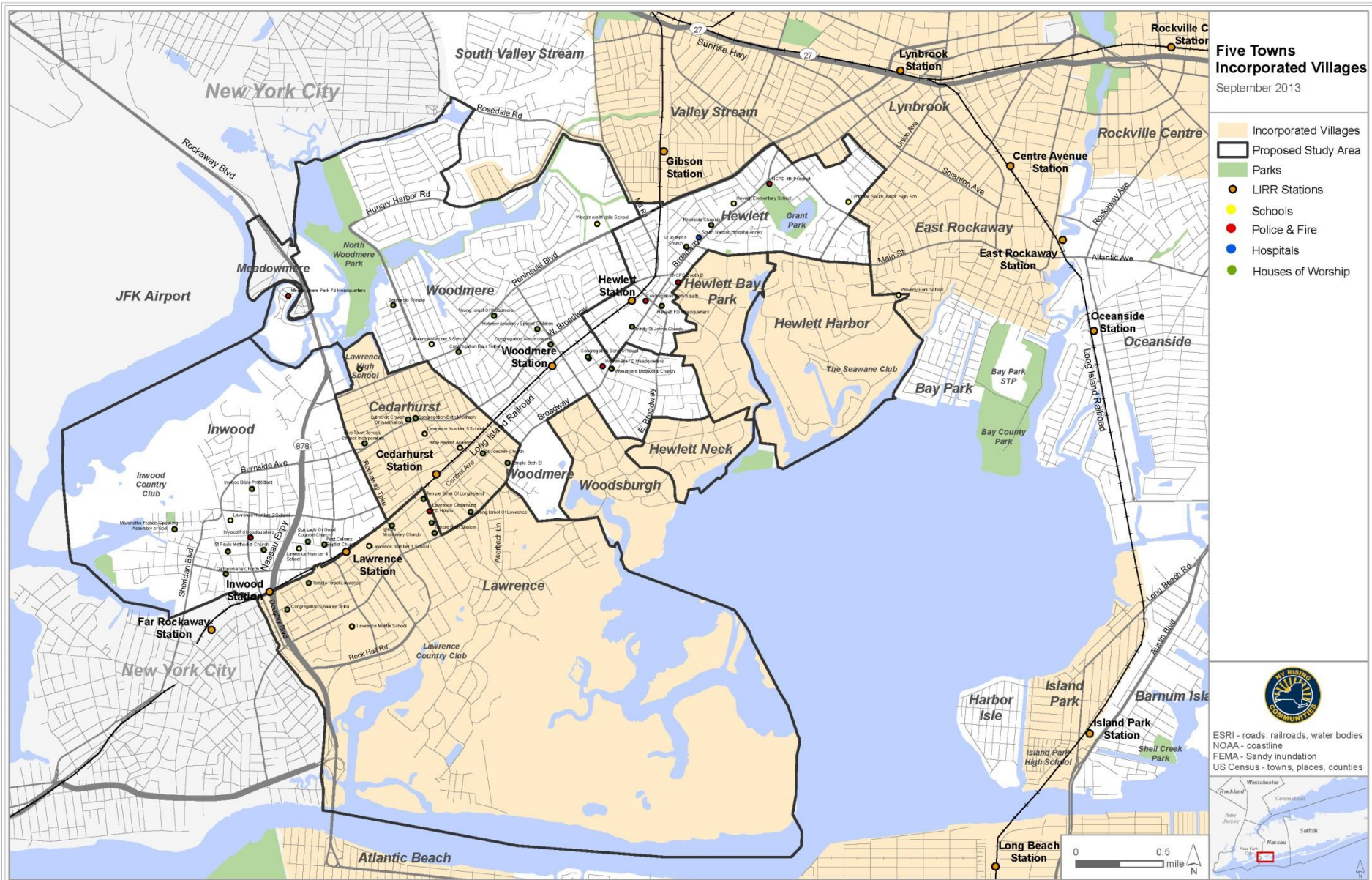
-  Proposed Study Area
-  Parks
-  LIRR Stations
-  Schools
-  Police & Fire
-  Hospitals
-  Houses of Worship



ESRI - roads, railroads, water bodies
NOAA - coastline
FEMA - Sandy inundation
US Census - towns, places, counties



Geographic Scope of Plan



CR Plan: Assessment of Risk and Needs

1. Community Assets
2. Assessment of Risk to Assets
3. Assessment of Risk to Systems
4. Assessment of Needs and Opportunities

CR Plan: Reconstruction Strategies

- 1. Community Planning and Capacity Building**
- 2. Economic Development**
- 3. Health and Social Services**
- 4. Housing**
- 5. Infrastructure**
- 6. Natural and Cultural Resources**

Community Planning and Capacity Building

- Educational Facilities
- Incorporate Open Space Resources into Resiliency Planning



Economic Development

- Enhance Future Economic Development Investments
- Protect / Strengthening Businesses & Areas
 - Diversifying
 - Access to Employment
 - Back-up Systems



Health and Social Services

- Emergency and Medical Services
- Community Facilities



Housing

- Which Neighborhoods are most vulnerable?
- What types of housing are at most risk?



Infrastructure

Systems in Need of Recovery

- Surface Water
- Sewage Treatment
- Electric & Natural Gas
- Potable Water
- Fuel Supply
- Transportation Systems
- Communications



Natural and Cultural Resources

- Role of Wetlands and Floodplain Lands
- Protection of Natural Resources



CR Plan: Implementation Schedule

1. Schedule of Implementation Actions

CR Plan Appendices

1. List of CR Planning Committee Members
2. Description of Public Engagement Process
3. Description of Priority Projects and their Costs and Benefits
4. Inventory of Assets

CR Plan Development: Step by Step

- 1. Organize for Action**
- 2. Asset Inventory**
- 3. Risk Assessment**
- 4. Needs and Opportunities**
- 5. Regional Planning Process**
- 6. Strategies for Investment and Action**
- 7. Community Reconstruction Plan**

Public Outreach Strategy

Engage the public throughout the CR Plan's development

- Identify key individuals, organizations and entities
- Identify techniques to be used (e.g., workshops, public meetings, websites and social media)
- Identify training opportunities
- Develop timeframe for outreach implementation



Community Vision

Community Visions should:

- Identify short, medium, and long-term goals
- Capitalize on social and economic assets
- Reduce risk and increase community resilience
- Provide focus and direction for the CR Plan

Assets

Identify assets in each category:

- Affected by coastal hazards
- In Extreme and High Risk Areas
- Defined as critical facilities by FEMA (essential to the health and welfare of the whole community, especially after hazard events)

Critical Facility Examples

- Emergency service facilities
- Schools
- Police and fire stations
- Public works facilities
- Jails and juvenile detention centers

Reconstruction Strategies: Projects, Programs and Actions

- Identify Priorities
- Evaluate Cost Benefit
- Determine Community Benefits
- Develop Funding Plan

Regional Issues

- Regional Economic Development Council
- Cleaner, Greener Regional Sustainability Plan
- Other Plans

OUR ECONOMY

NORTH COUNTRY REGIONAL SUSTAINABILITY PLAN
prepared for North Country Planning Collaborative, Essex County, May 2013



This Plan is funded through the Cleaner Greener Communities Program,
New York State Energy Research and Development Authority

DELIVERING

LEADING THE ECONOMIC RENAISSANCE OF NEW YORK'S SMALL CITIES AND RURAL COMMUNITIES
NORTH COUNTRY REGIONAL ECONOMIC DEVELOPMENT COUNCIL PROGRESS REPORT 2012

Break

Five Towns Proposed Study Area
September 2013

Legend:

- Proposed Study Area
- Parks
- LIRR Stations
- Schools
- Police & Fire
- Hospitals
- Houses of Worship

Map Labels:

New York City, South Valley Stream, Rockaway Blvd, JFK Airport, Meadowmere, North Woodmere Park, Woodmere, Cedarhurst, Inwood, Lawrence, Atlantic Beach, Long Beach Station, Island Park Station, Harbor Isle, Island Park, Barnum Isle, Shell Creek Park, Westchester, New Jersey, New York, Suffolk, Nassau.

September 2013

-  Proposed Study Area
-  Parks
-  LIRR Stations
-  Schools
-  Police & Fire
-  Hospitals
-  Houses of Worship



ESRI - roads, railroads, water bodies
NOAA - coastline
FEMA - Sandy inundation
US Census - towns, places, counties



Geographic Scope of Plan

