



New York Rising Community Reconstruction Program

Five Towns

Conceptual Plan

Public Workshop #2 November 19, 2013



Introductions

Five Towns Planning Committee

Bob Block, Co-Chair

Felipe Plaza

Pete Sobol, Co-Chair

Jonathan Polakoff

Ross Epstein

Ruth Samuelson

David Henschel

Linda Santisteban

Mordecai Kamenetzky

Steve A. Schneider

Diane Kirchner

Stu Troyetsky

Reuben Maron

Patty Vacchio

Introductions

5 Towns Planning Committee

Co-Chairs

Bob Block
Pete Sobol

Committee Members

NY Rising Community Reconstruction Program

Director: Jamie Rubin

Nassau County Lead: Laura Munafo

Regional Planner: Ian Francis

David Ashton

Planning Team

Perkins Eastman

BFJ Planning

Louis Berger Group

Howard/Stein-Hudson -- Urbanomics -- dLand Studios

PACO Group -- Marsh Risk Consulting -- Amman & Whitney -- VJ Associates -- Tidal Basin

Community Reconstruction Plan

Tonight's agenda

7:00 **Welcome and Sign-in**

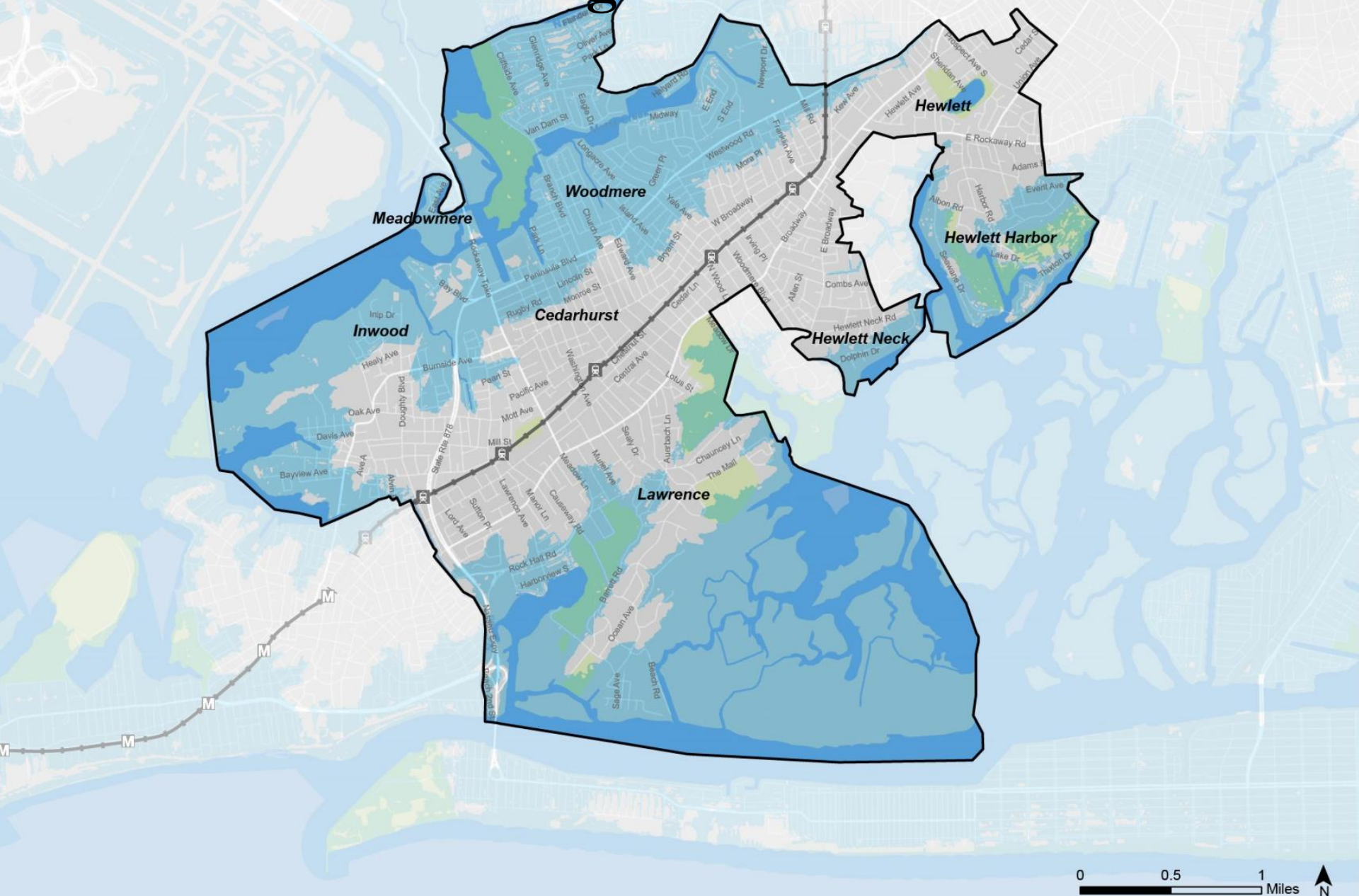
7:15 – 7:45 **Presentation**

Overview of the New York Rising Community Reconstruction Program

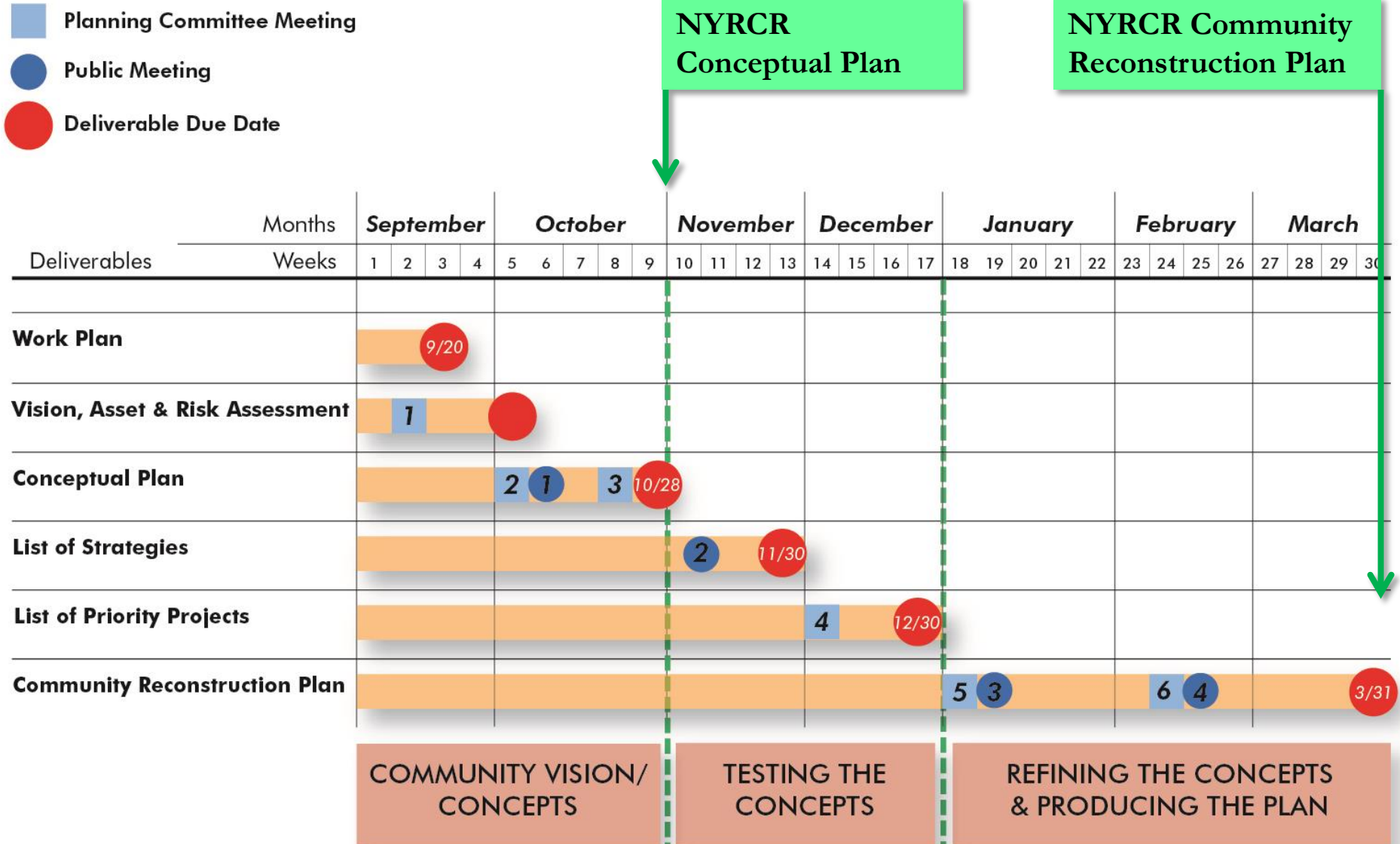
Five Towns Conceptual Plan

7:45 – 9:00 **Roundtable Discussions – We need your feedback!**

Five Towns Planning Area



NYRCR Program Schedule



Community Reconstruction Plan

Key Elements of the Plan

The Plan should identify projects and actions that:

- Increase resilience of *key assets*
- Address *short, medium and long-term risks*
- Balance *costs and benefits*
- Protect *vulnerable populations*
- Drive *economic growth*
- Coordinate with *Regional Initiatives*

The Six Reconstruction Strategies

1. Community Planning & Capacity Building



2. Economic Development



3. Health & Social Services



4. Housing



5. Infrastructure



6. Natural & Cultural Resources



NYRCR Program Funds:

Up to \$27.6 million allocated for projects the Five Towns:

- Cedarhurst: \$3,000,000
- Hewlett: \$3,000,000
- Hewlett Harbor: \$3,000,000
- Hewlett Neck: \$3,000,000
- Inwood: \$3,000,000
- Lawrence: \$3,000,000
- Meadowmere Park: \$3,000,000
- Woodmere: \$6,609,814

Possible additional funds for:

- Regional Collaboration
- Use of Technology
- Community Involvement
- Inclusion of Vulnerable Populations
- Use of Green Infrastructure
- Innovative Financing
- Infrastructure Investments with Co-Benefits
- Resilient Economic Growth



New York Rising Community Reconstruction Program

Five Towns

Conceptual Plan



Public Workshop #2 – November 19, 2013



Preparing the Conceptual Plan

Planning
Committee
Meeting 1
(09/12)

Listening



Planning
Committee
Meeting 2
(10/03)

*Needs and
Opportunities*



Public
Outreach
Meeting 1
(10/17)

*Reviewing
Needs and
Opportunities*



Planning
Committee
Meeting 3
(10/24)

*Review Draft
Conceptual
Plan*



Conceptual
Plan Due
(10/28)



Public
Meeting 2
(11/19)

*Present
Conceptual
Plan/Identify
Key Strategies*

NYRCR Conceptual Plan: Table of Contents

1. Vision Statement
2. Community Profile
3. Assessment of Risks & Needs
4. Preliminary Reconstruction Strategies
5. Public Engagement
6. Preliminary Implementation Structure

NYRCR Conceptual Plan

- 1. Vision Statement**
- 2. Community Profile**
- 3. Assessment of Risks & Needs**
- 4. Preliminary Reconstruction Strategies**
- 5. Public Engagement**
- 6. Preliminary Implementation Structure**

Vision Statement

The vision for Five Towns is for a future in which these eight distinct communities will be better prepared, no matter the disaster, and for an improved system of cooperation & collaboration between the member communities to build upon their shared resources.

Vision Statement

Increase the resilience of high risk areas:

- Provide greater protections from flooding and stormwater for residential and commercial districts
- Restore natural resources and wetlands to increase their capacity to absorb flood and rainwater

Increase emergency response capacity:

- Create a coordinated disaster response plan that responds to the needs of vulnerable populations by integrating the resources of local governments and community-based organizations
- Strengthen community based organizations such as community centers, houses of worship, schools, and youth groups to expand services and enhance recovery efforts after storms

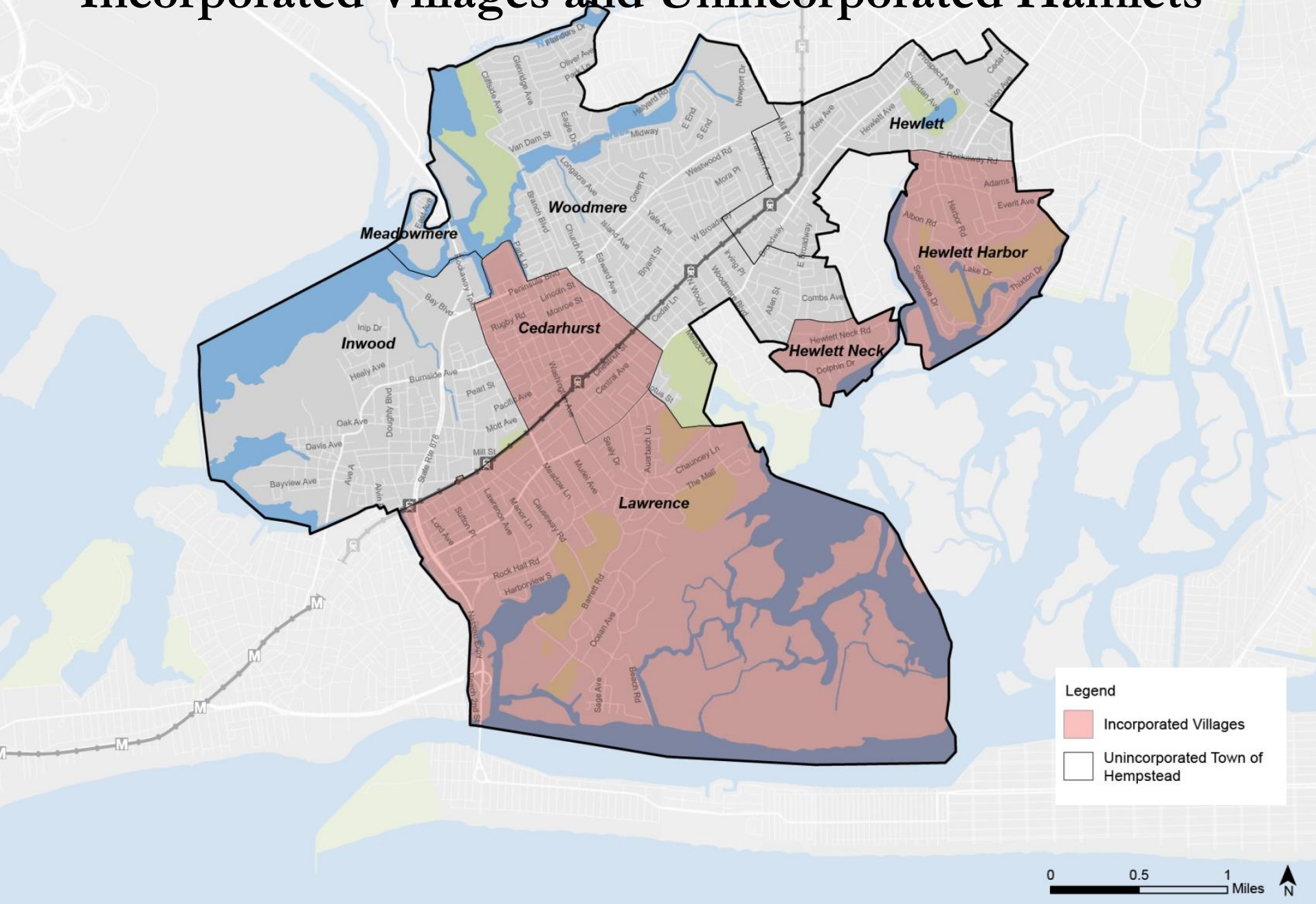
Improve access from high risk areas to high ground:

- Build more robust networks of communication between these diverse communities
- Create a stronger transportation network by elevating evacuation routes out of the flood zone and improving traffic flow
- Create a more resilient power grid that limits outages and implements district energy solutions

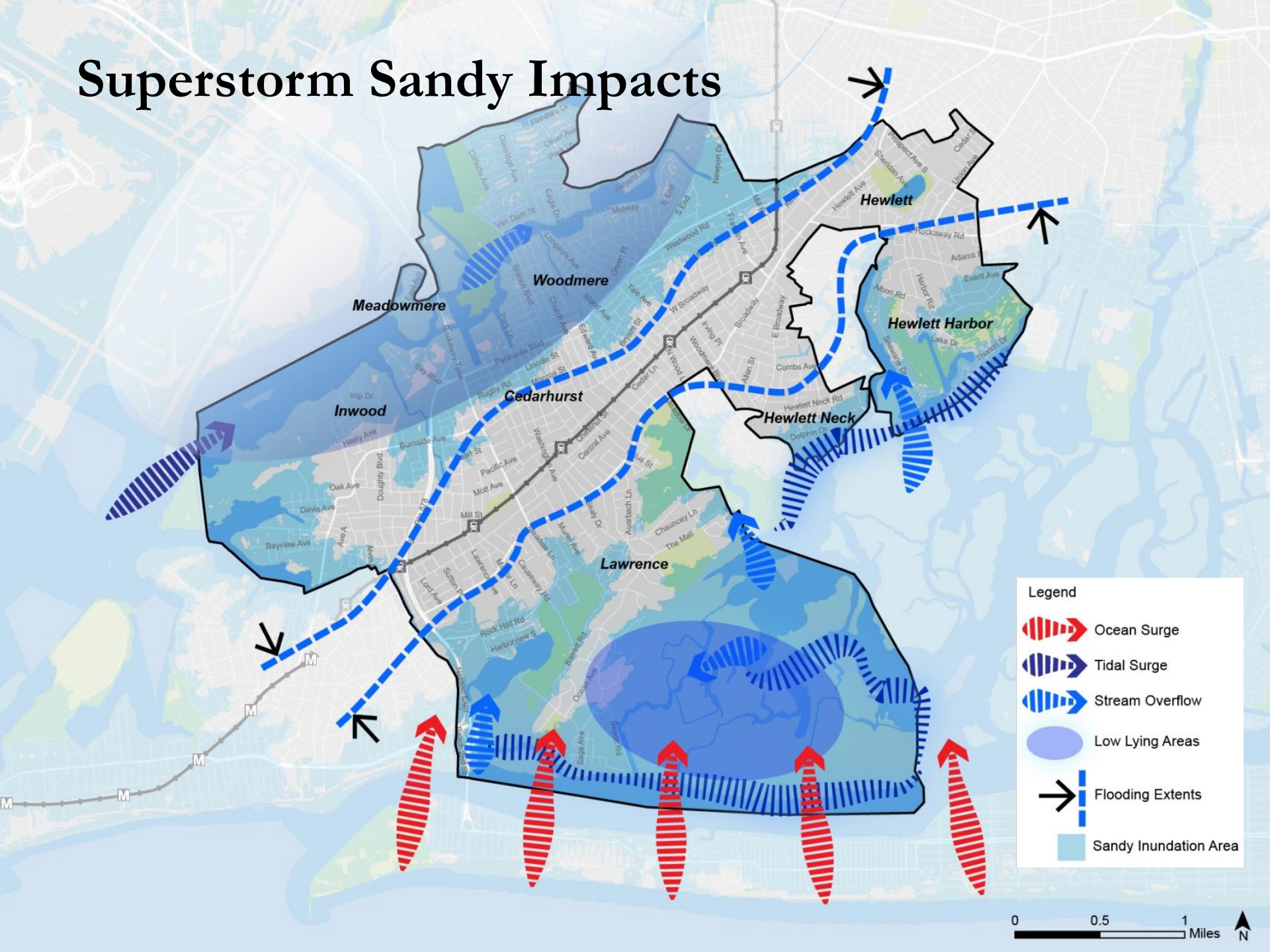
NYRCR Conceptual Plan

1. Vision Statement
2. Community Profile
3. Assessment of Risks & Needs
4. Preliminary Reconstruction Strategies
5. Public Engagement
6. Preliminary Implementation Structure

Incorporated Villages and Unincorporated Hamlets



Superstorm Sandy Impacts



NYRCR Conceptual Plan

1. Vision Statement
2. Community Profile
3. **Assessment of Risks & Needs**
4. Preliminary Reconstruction Strategies
5. Public Engagement
6. Preliminary Implementation Structure

Assessment of Risks & Needs

The process of completing an NYRCR Plan is largely framed in terms of community assets and the risks that they face.

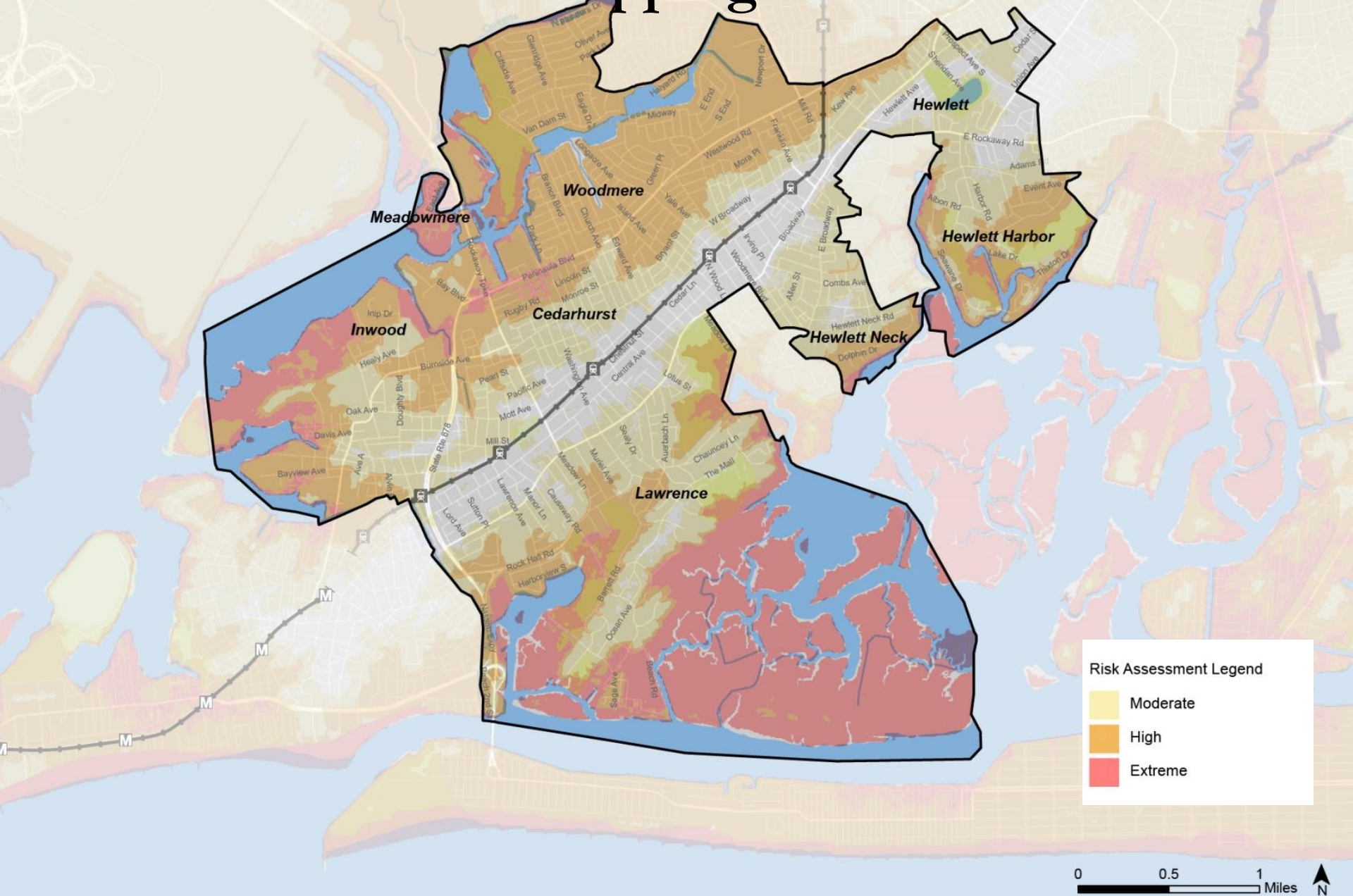
Assets

- Facilities, institutions, or networks that are essential to day to day life, long-term resilience, and rapid disaster recovery in the Five Towns.
- Economic; Health and Social Services; Housing; Infrastructure; Natural & Cultural Resources; Socially Vulnerable Populations

Risk

- The NYRCR Plan will utilize risk assessment maps which identify whether certain assets are located within extreme, high, or moderate risk areas.

Risk Assessment Mapping Tool



Risk Assessment Mapping Tool

Extreme Risk Areas

Areas currently at risk of frequent inundation, vulnerable to erosion in the next 40 years, or likely to be inundated in the future due to sea level rise:

- FEMA V zone.
- Shallow Coastal Flooding per NOAA NWS's advisory threshold.
- Natural protective feature areas susceptible to erosion.
- Sea level rise - Added 3 feet to the MHHW shoreline and extended this elevation inland to point of intersection with ground surface.

Risk Assessment Legend

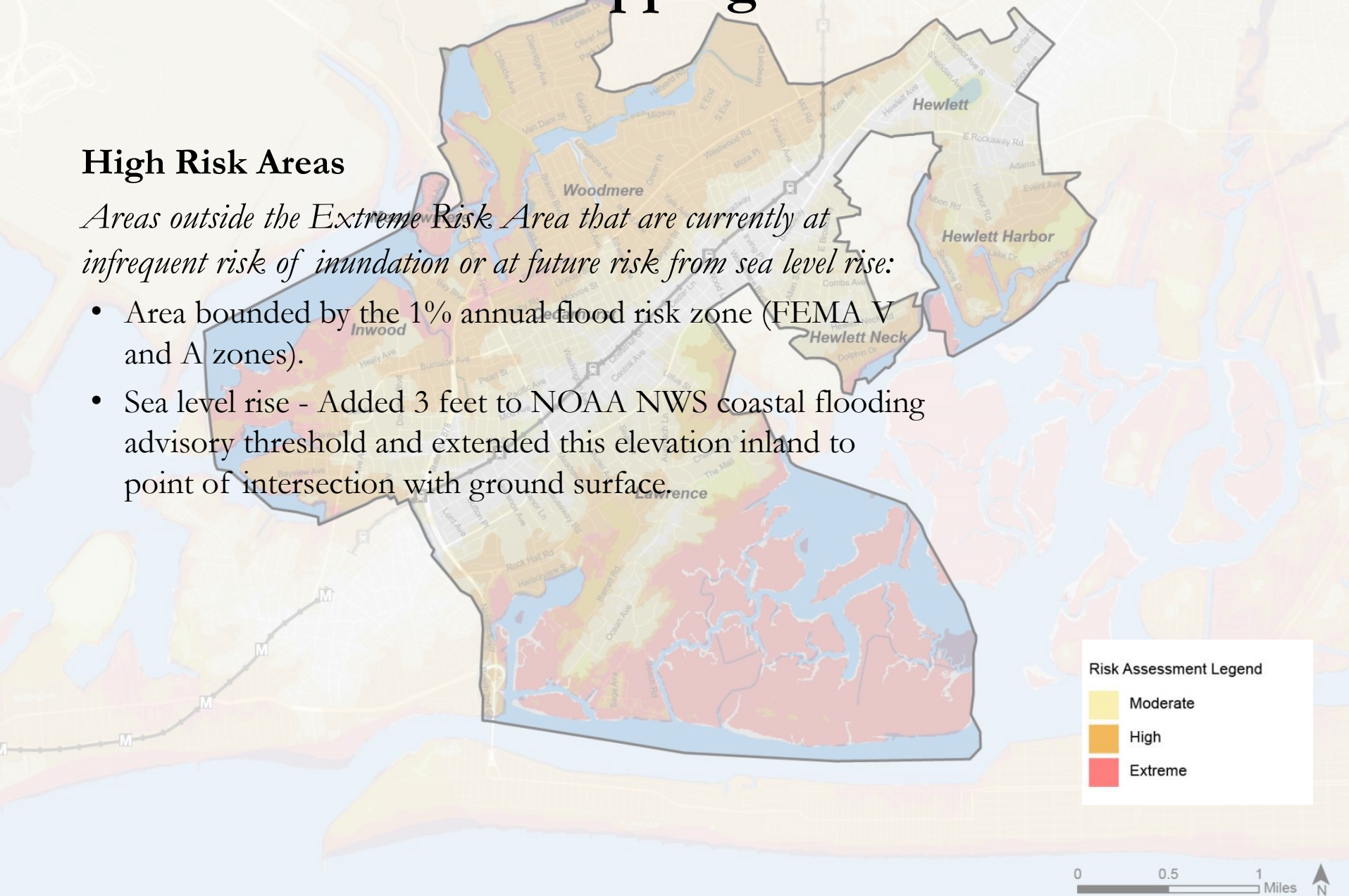
- Moderate
- High
- Extreme

Risk Assessment Mapping Tool

High Risk Areas

Areas outside the Extreme Risk Area that are currently at infrequent risk of inundation or at future risk from sea level rise:

- Area bounded by the 1% annual flood risk zone (FEMA V and A zones).
- Sea level rise - Added 3 feet to NOAA NWS coastal flooding advisory threshold and extended this elevation inland to point of intersection with ground surface.



Risk Assessment Mapping Tool

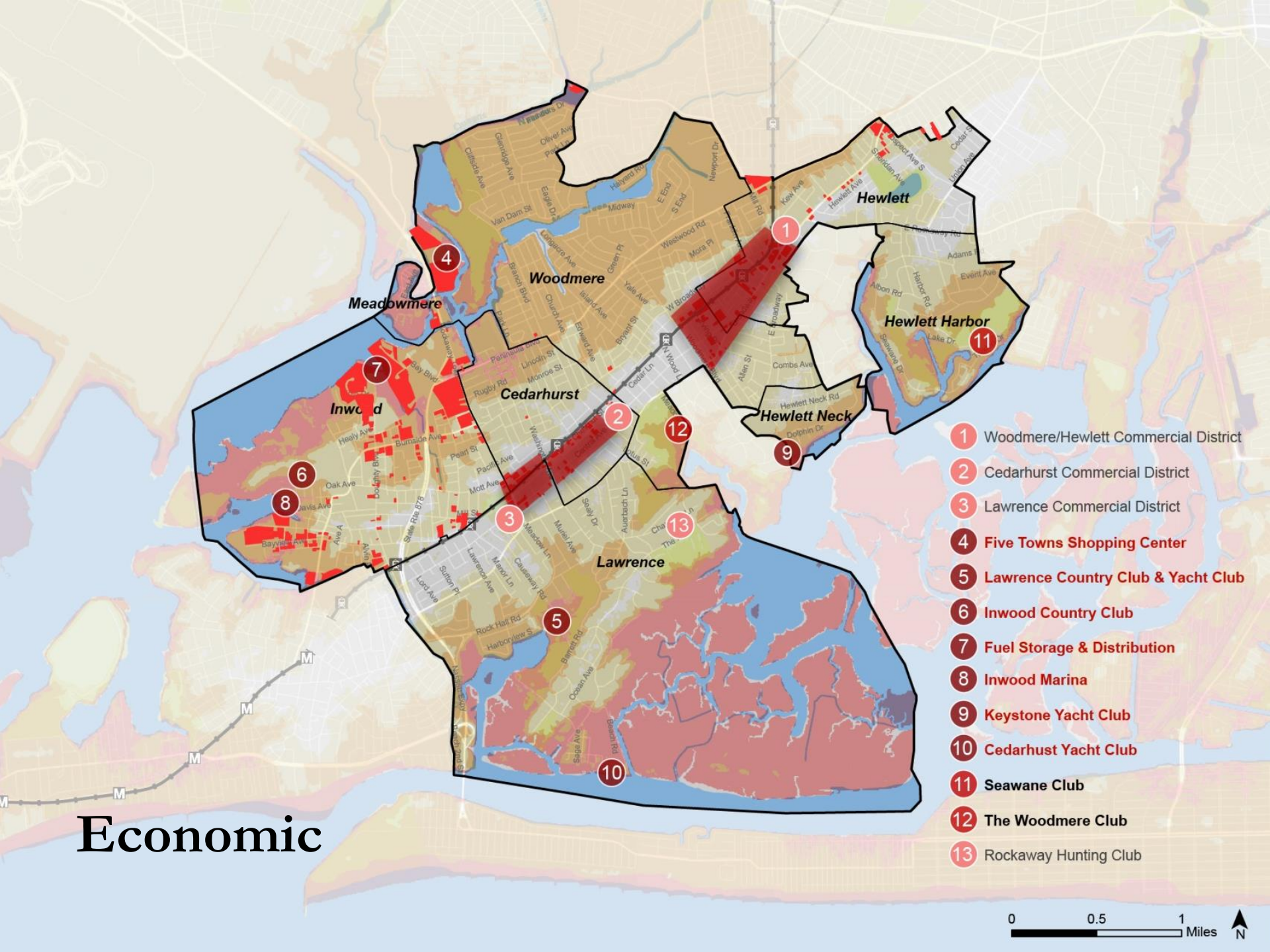
Moderate Risk Areas

Areas outside the Extreme and High Risk Areas but currently at moderate risk of inundation from infrequent events or at risk in the future from sea level rise:

- Area bounded by the 0.2% annual risk (500 year) flood zone, where available.
- Sea level rise - Added 3 feet to the Base Flood Elevation for the current 1% annual risk flood event and extended this elevation inland to point of intersection with ground surface.
- Area bounded by SLOSH category 3 hurricane inundation zone.

Risk Assessment Legend

- Moderate
- High
- Extreme

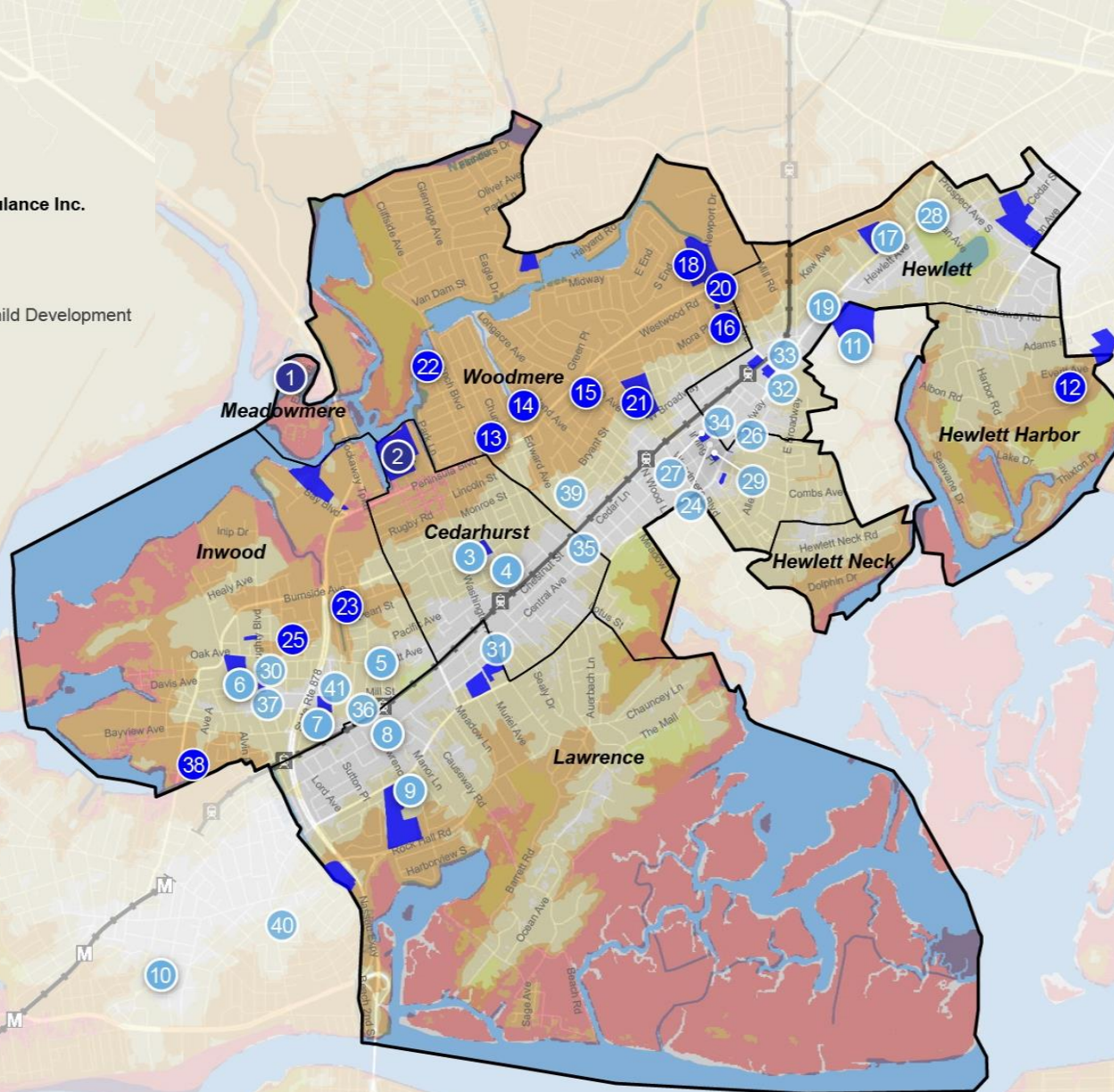


Economic

- 1 Woodmere/Hewlett Commercial District
- 2 Cedarhurst Commercial District
- 3 Lawrence Commercial District
- 4 Five Towns Shopping Center
- 5 Lawrence Country Club & Yacht Club
- 6 Inwood Country Club
- 7 Fuel Storage & Distribution
- 8 Inwood Marina
- 9 Keystone Yacht Club
- 10 Cedarhurst Yacht Club
- 11 Seawane Club
- 12 The Woodmere Club
- 13 Rockaway Hunting Club

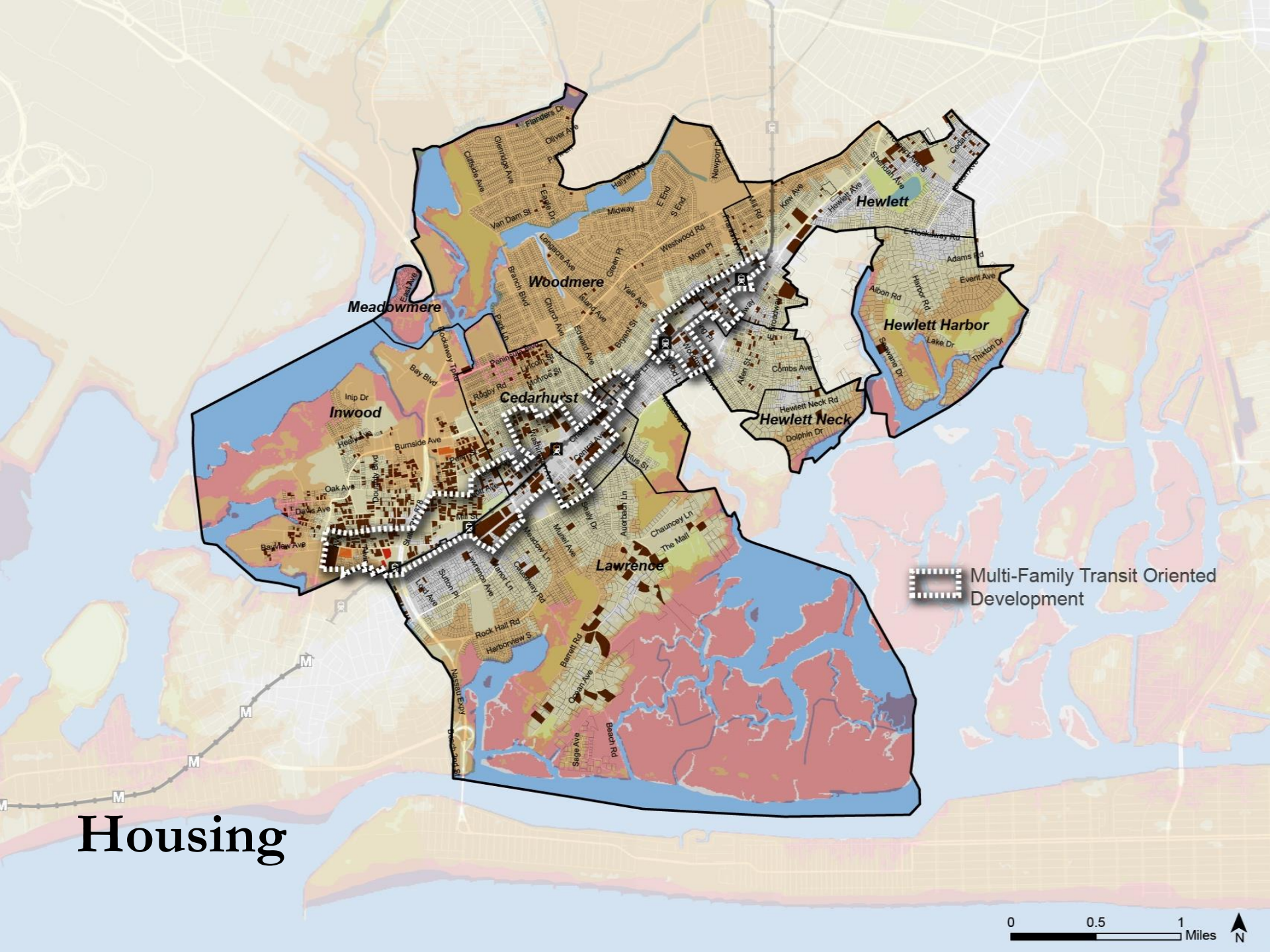
0 0.5 1 Miles N

- 33 Hewlett Post Office
- 34 Woodmere Post Office
- 35 Cedarhurst Post Office
- 36 Lawrence Post Office
- 37 Inwood Post Office
- 38 Hunter Ambulette-Ambulance Inc.
- 39 Hatzolah Ambulance
- 40 Hatzolah Ambulance
- 41 Crossroads School for Child Development



- 1 Meadowmere Park Fire House
- 2 Lawrence High School
- 3 Lawrence #5 School
- 4 Cedarhurst Village Hall
- 5 Five Towns Community Center
- 6 Lawrence #2 School
- 7 Lawrence #4 School
- 8 Lawrence Village Hall
- 9 Lawrence Middle School
- 10 St. John's Episcopal Hospital
- 11 Hewlett Neck Village Hall
- 12 Hewlett Harbor Village Hall
- 13 Lawrence - Woodmere School District (closed)
- 14 DRS Yeshiva High School
- 15 Young Israel of Woodmere
- 16 Franklin Early Childhood Center
- 17 Hewlett Elementary School
- 18 Woodmere Middle School
- 19 Hewlett High School
- 20 Yeshiva of South Shore
- 21 Hebrew Academy for Special Children
- 22 Sephardic Temple of Cedarhurst
- 23 Inwood Buccaneers
- 24 Five Towns Community Chest
- 25 Five Towns Early Learning Center
- 26 Hewlett Woodmere Public School (Woodmere Education Center)
- 27 Woodmere Rehabilitation & Health Care Center
- 28 Nassau County Police Dept. 4th Precinct
- 29 Woodmere Fire Department
- 30 Inwood Fire Department
- 31 Lawrence Cedarhurst Fire Dept.
- 32 Hewlett Fire Department

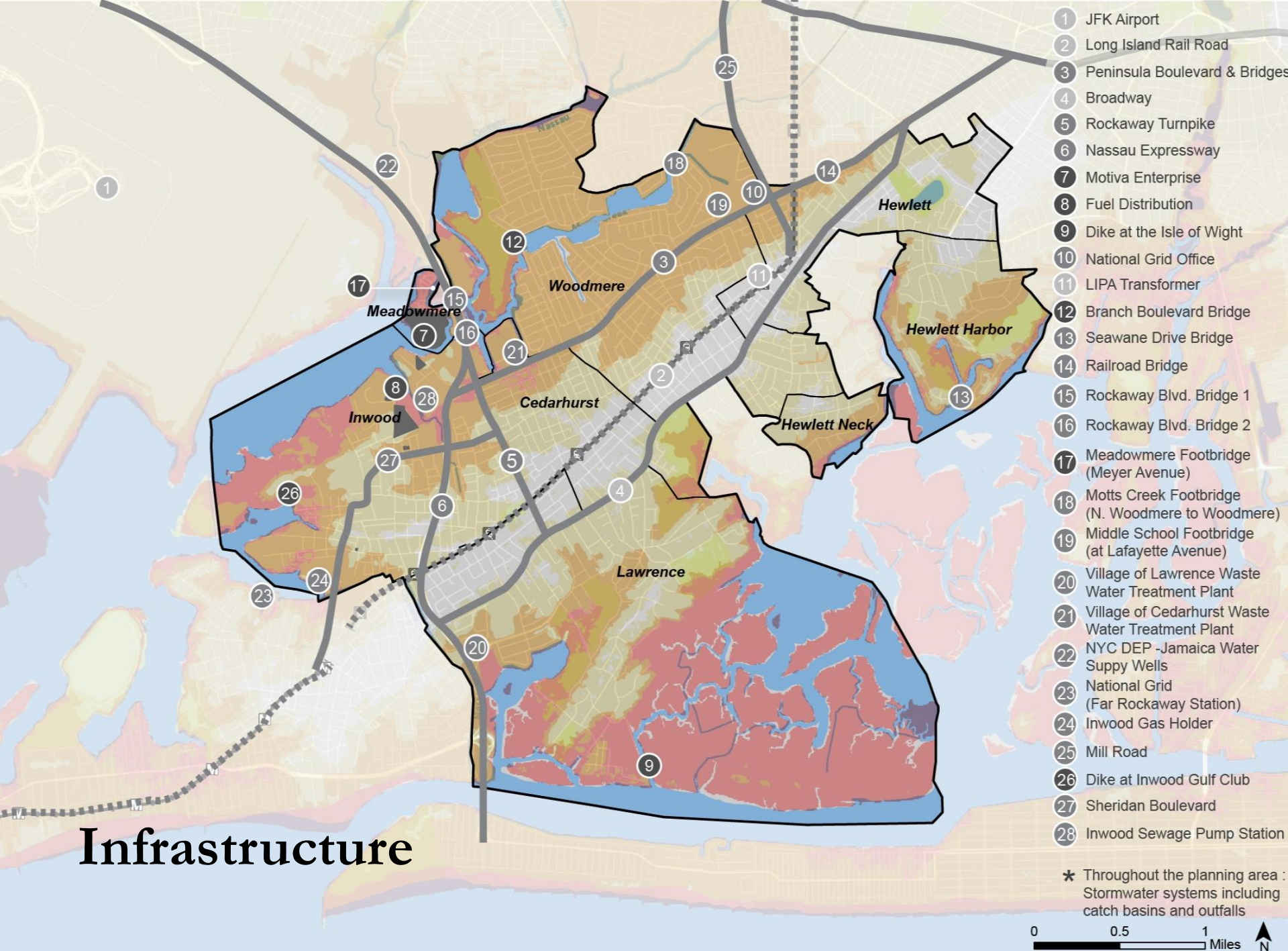
Health & Social Services

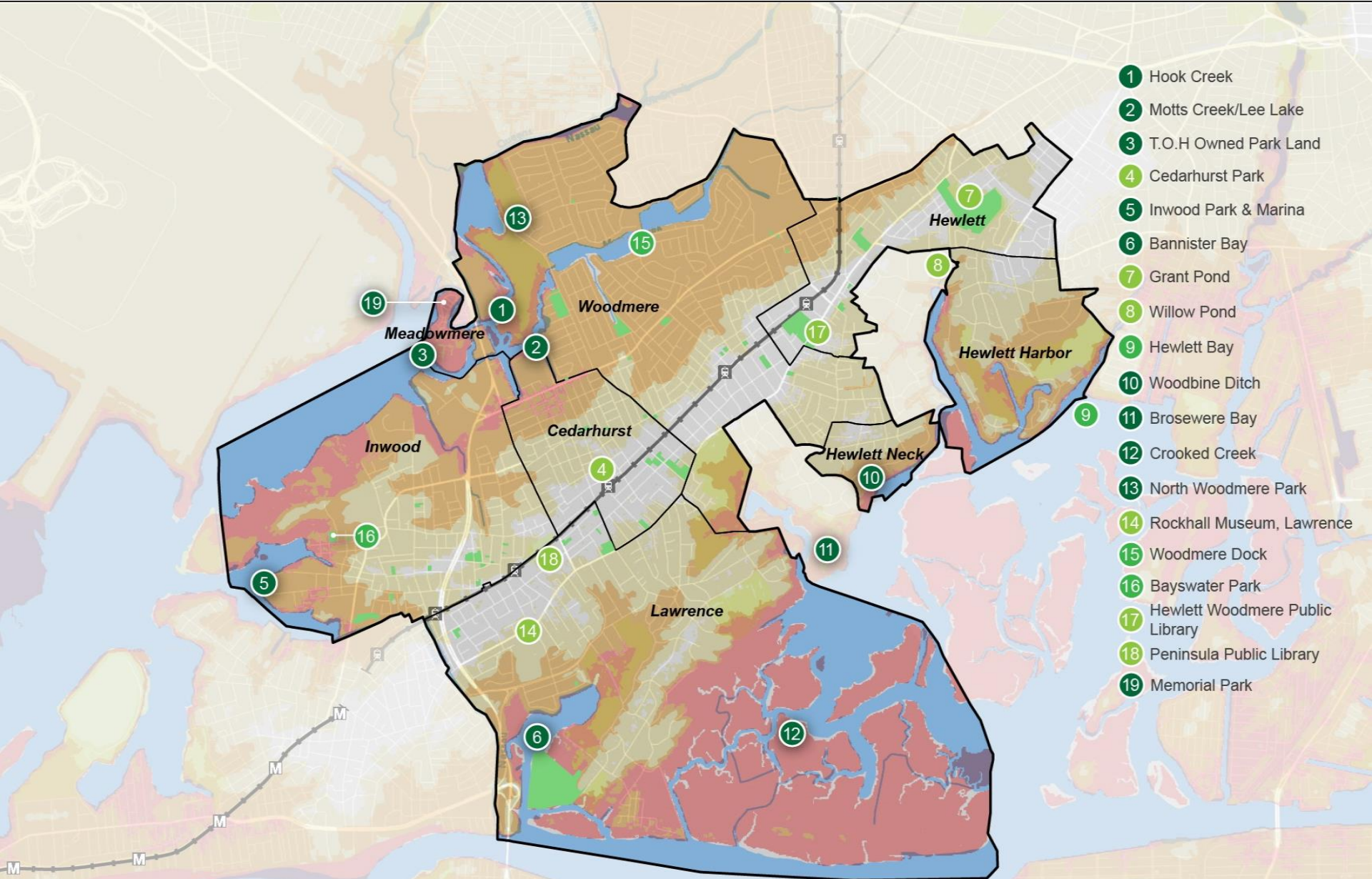


Housing

Multi-Family Transit Oriented Development



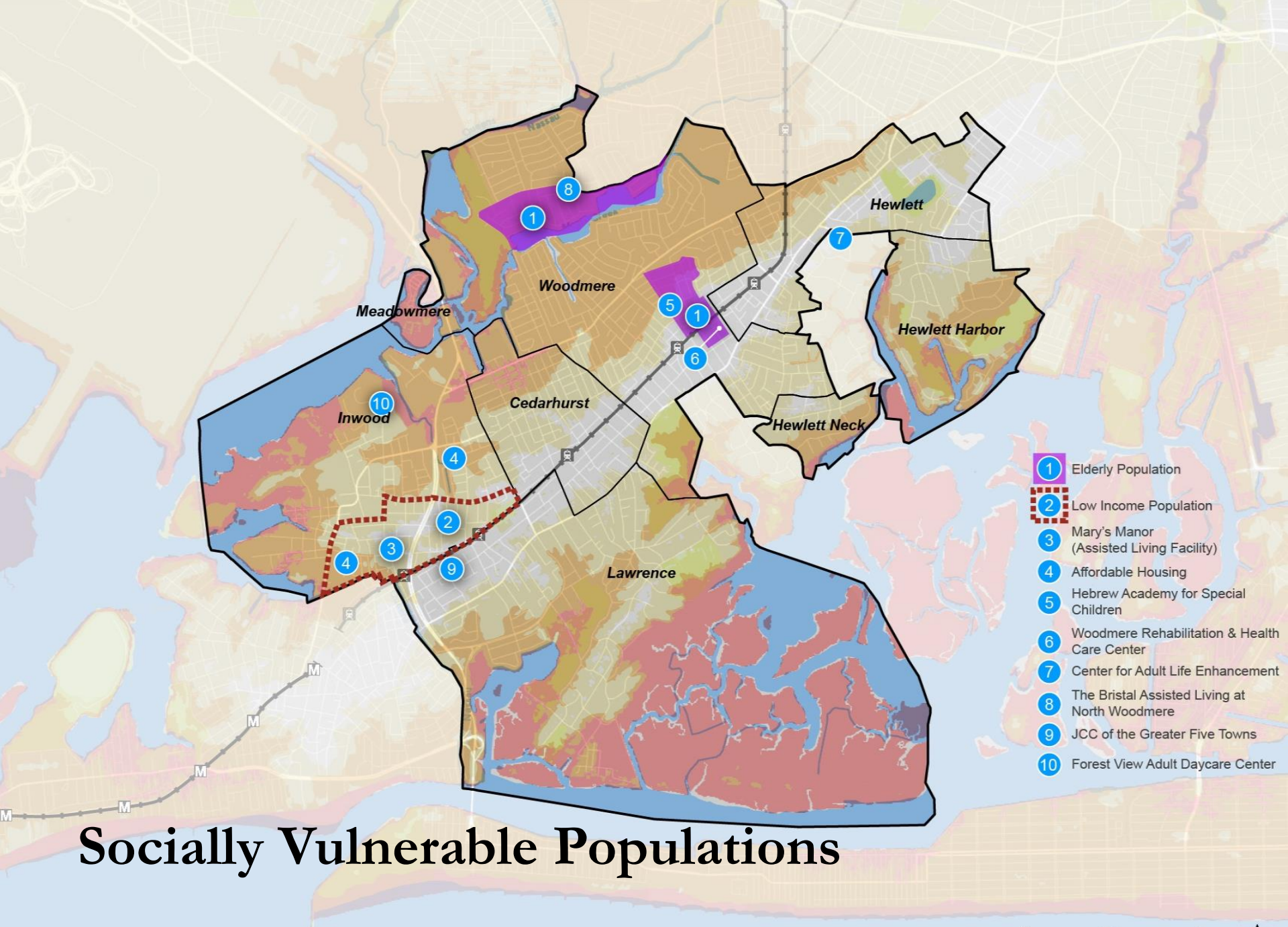




Natural & Cultural Resources

* Religious Establishments & Schools shown on Separate Map (see appendix)

0 0.5 1 Miles 



Socially Vulnerable Populations

Needs & Opportunities

The objective of the needs and opportunities assessment is to evaluate potential for increased resilience in the short, medium, and long-term in the Five Towns.

Needs & Opportunities

Community Planning & Capacity Building

Need: Coordination between relief organizations

Opportunity: Strong network of community-based organizations

Economic Development

Need: Flood protections for economic centers

Opportunity: Strong commercial corridors along Central Ave, Rockaway Turnpike, and Broadway

Health & Social Services

Need: Accessible medical facilities and resilient fire and police facilities

Opportunity: Connections between community organizations and local governments

Housing

Need: Solution to aging housing stock and limited affordable housing in some areas

Opportunity: Strong sense of community in cohesive neighborhoods

Infrastructure Systems

Need: Strengthened coastal protections, stormwater infrastructure, power grid, and transportation

Opportunity: Potential to utilize grey and green infrastructure and implement microgrids

Natural & Cultural Resources

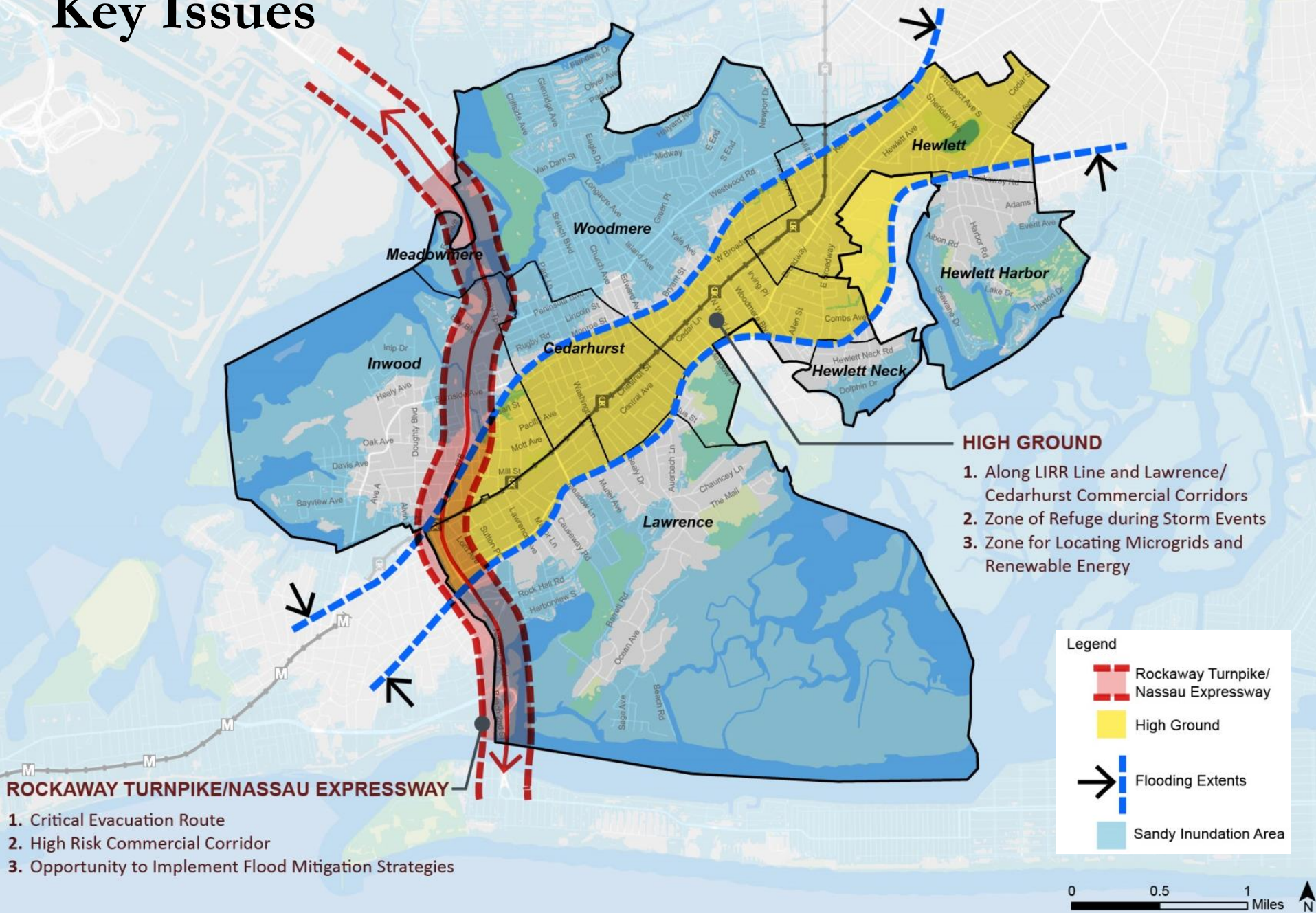
Need: Improvements to wetlands that have been degraded and overdeveloped.

Opportunity: Repair wetlands that trap floodwaters, remove pollution, and provide wildlife habitat

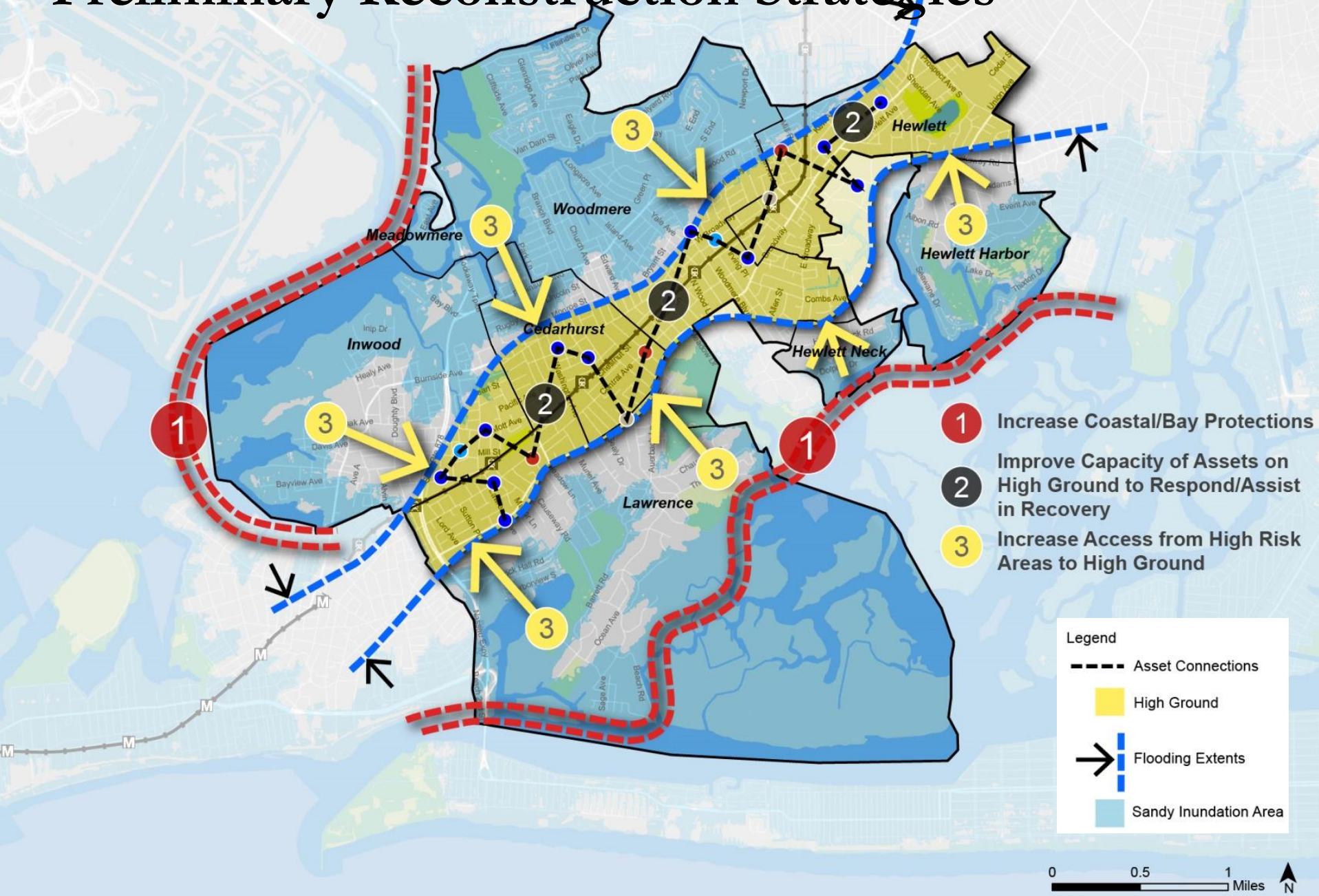
NYRCR Conceptual Plan

1. Vision Statement
2. Community Profile
3. Assessment of Risks & Needs
4. **Preliminary Reconstruction Strategies**
5. Public Engagement
6. Preliminary Implementation Structure

Key Issues



Preliminary Reconstruction Strategies



Preliminary Reconstruction Strategies

Strategy 1:

Increase the resilience to extreme weather in high risk coastal areas by addressing coastal protections and stormwater infrastructure.

Strategy 2:

Increase the emergency response capacity of facilities on high ground by building on the strong network of civic, health and social service organizations in Five Towns.

Strategy 3:

Improve access from high risk areas to high ground and regional connections to strengthen evacuation routes and contribute to economic development along key corridors.

POTENTIAL PROJECTS:

CEDARHURST

1. Lawrence High School: Levee
2. Cedarhurst DPW : Bulkhead Construction
3. Rockaway Turnpike Floodgates
4. Cedarhurst Village Hall: Disaster Response Plan

HEWLETT

5. Stormwater Infrastructure Upgrades

HEWLETT HARBOR

6. Pepperidge Road Stormwater Upgrades
7. Stormwater Infrastructure Upgrades

HEWLETT NECK

8. Stormwater Infrastructure Upgrades
9. Woodbine Ditch Stormwater Upgrades

INWOOD

10. Checks Valves on Stormwater Outfalls (Bayswater Ave)
11. Five Towns Community Center Repairs and Disaster Response Plan
12. Inwood Buccaneers Facility Repairs
13. Gas Storage Facilities: Levee
14. Inwood Country Club: Dike Repairs

LAWRENCE

15. Meadow Lane Stormwater Upgrades
16. Dike at the Isle of Wight Repairs

MEADOWMERE PARK

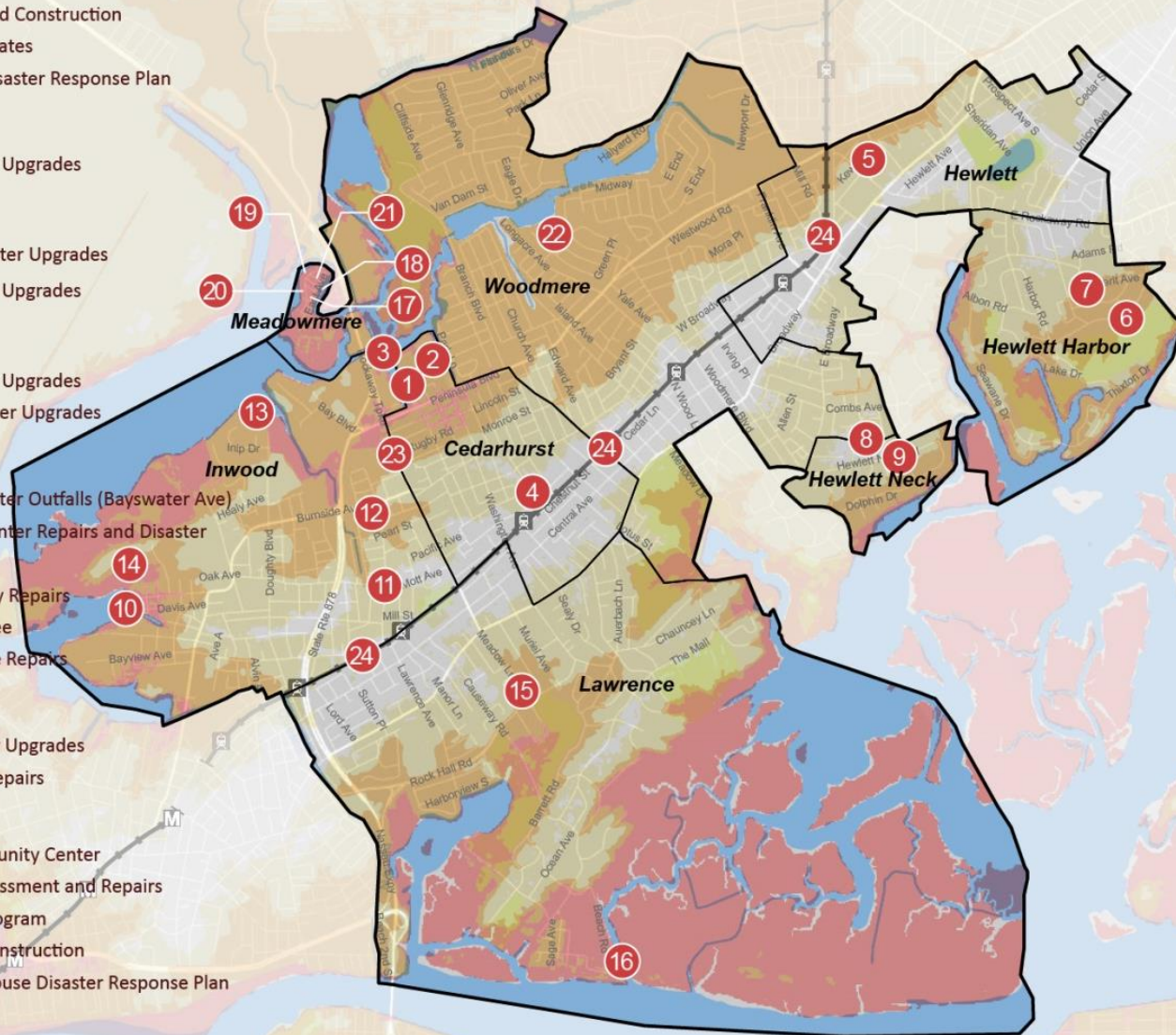
17. Meadowmere Park Community Center
18. Footbridge Structural Assessment and Repairs
19. Bulkhead Replacement Program
20. TOH owned Parkland Reconstruction
21. Meadowmere Park Fire House Disaster Response Plan

WOODMERE

22. Stormwater Infrastructure Upgrades

REGIONAL

23. Rockaway Turnpike/Nassau Expressway Upgrades
24. Identify Key Locations on High Ground for Microgrids and Renewable energy



Potential Projects by Community

Community	Project Name	Project Description
Cedarhurst	Lawrence High School	Evaluation of closing, relocation, or hardening
	Cedarhurst DPW Facility	Construct bulkhead to protect DPW facility from flooding
	Cedarhurst Village Hall Disaster Response Plan	Capacity building for disaster response
	Rockaway Turnpike Floodgates	Study flood protection options along Rockaway Turnpike at Hook and Motts Creek
	Stormwater Infrastructure Upgrades	Repair, upgrade, and maintain stormwater pipes, drains, and catch basins

Potential Projects by Community

Community	Project Name	Project Description
Hewlett	Stormwater Infrastructure Upgrades	Repair, upgrade, and maintain stormwater pipes, drains, and catch basins
Hewlett Harbor	Stormwater Infrastructure Upgrades	Repair, upgrade, and maintain stormwater pipes, drains, and catch basins
	Pepperidge Road Stormwater Upgrades	Stormwater upgrades and repaving to repair damage from Sandy and prevent flooding
	Seawane Drive Bridge	Repair and fortify Seawane Drive Bridge

Potential Projects by Community

Community	Project Name	Project Description
Hewlett Neck	Stormwater Infrastructure Upgrades	Repair, upgrade, and maintain stormwater infrastructure
	Woodbine Ditch	Improve stormwater capacity of Woodbine Ditch
	Street Light Infrastructure	Protect exposed underground wires
Inwood	Stormwater Infrastructure Upgrades	Install check valves on outfalls at Bayswater Blvd; Repair, upgrade, and maintain stormwater infrastructure
	Five Towns Community Center Disaster Response Plan	Capacity building for disaster response
	Inwood Buccaneers Facility	Repair damage caused by Sandy and increase capacity for response to future disasters
	Gas Storage Facilities	Enhance existing flood levees
	Inwood Country Club Dike	Repair existing dike to prevent flooding of adjacent residential neighborhood

Potential Projects by Community

Community	Project Name	Project Description
Lawrence	Meadow Lane Stormwater Upgrades	Install catch basin pump system
	Dike at the Isle of Wight	Repair breach in dike and increase height to protect neighborhood from large storm surge
Meadowmere Park	Meadowmere Park Community Center	Build new community center to serve as a recovery shelter during emergencies and a day-to-day community resource
	Footbridge Structural Assessment and Repairs	Conduct structural assessment and make necessary repairs
	Bulkhead Replacement Program	Bulkhead Replacement Program (assistance to residents provided by Town of Hempstead)
	Town of Hempstead-owned Parkland Reconstruction	Repair bulkhead, reconstruct and reopen unused parkland owned by the Town of Hempstead
	Meadowmere Park Fire House	Enhance flood protections and response capacity

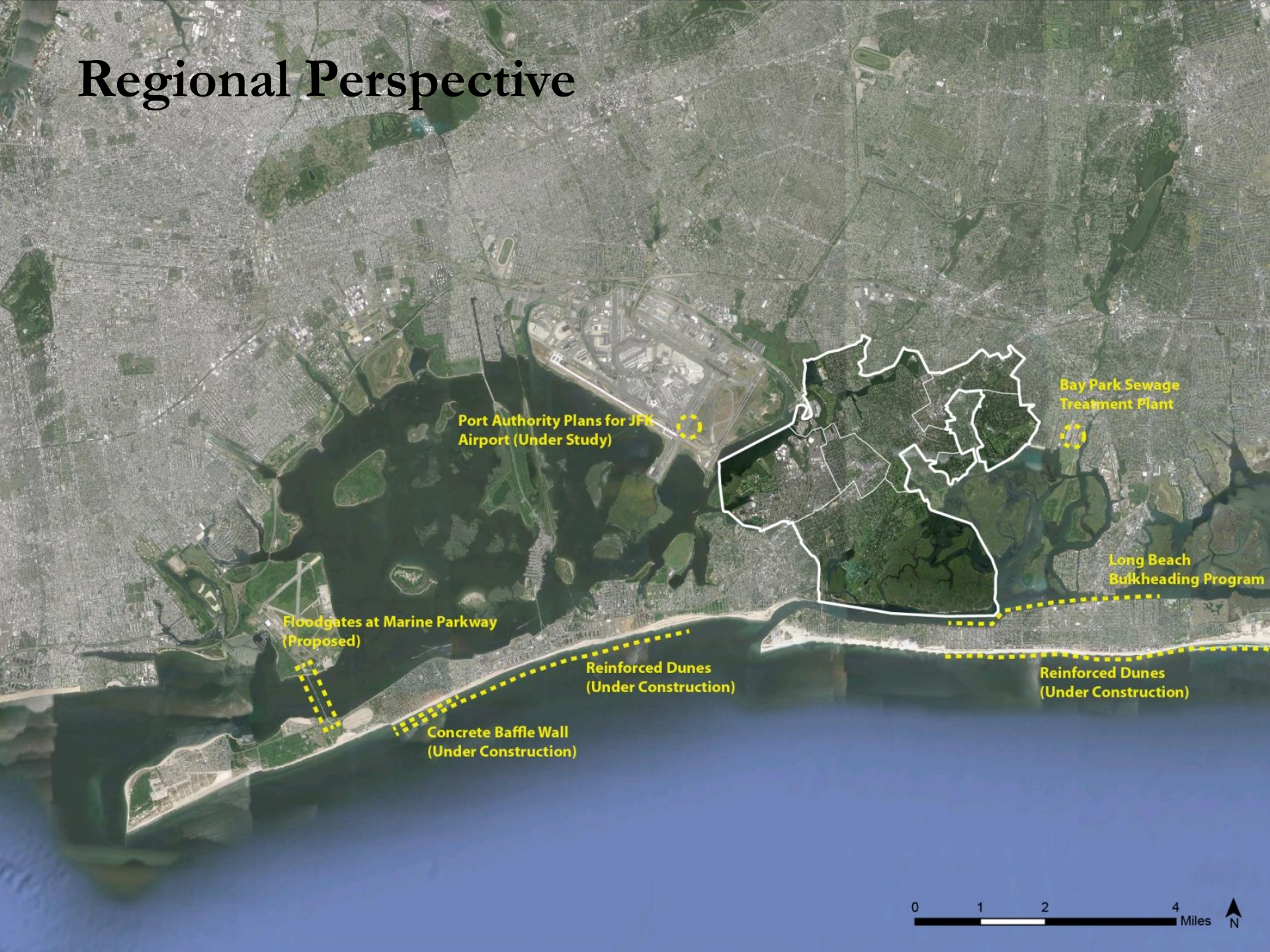
Potential Projects by Community

Community	Project Name	Project Description
Woodmere	Stormwater Infrastructure Upgrades	Repair, upgrade, and maintain stormwater pipes, drains, and catch basins
Shared Projects	Lawrence High School	Evaluation of closing, relocation, or hardening; Construct floodgates at Rockaway Turnpike or levees to prevent flooding, or alternative
	Five Towns Community Center Repairs and Disaster Response Plan	Capacity building for disaster response; Upgrade generator, showers, bathrooms, laundry facility

Potential Projects by Community

Community	Project Name	Project Description
Regional	Rockaway Turnpike/Nassau Expressway Upgrades	Study the potential to build floodgates at Motts Creek and Hook Creek; Elevate roadways to act as a levee; Conduct traffic improvement measures to reduce congestion
	Microgrids	Identify key locations on high ground for microgrids and renewable energy to ensure reliable communications during emergencies
	Coordinated Mobile Communications Unit	Create a coordinated operational response for Nassau County Fire Departments
	Stormwater Infrastructure Upgrades	Repair, upgrade, and maintain stormwater pipes, drains, and catch basins
	Bulkhead Replacement Program	Create public benefit district for bulkhead repairs

Regional Perspective



NYRCR Conceptual Plan

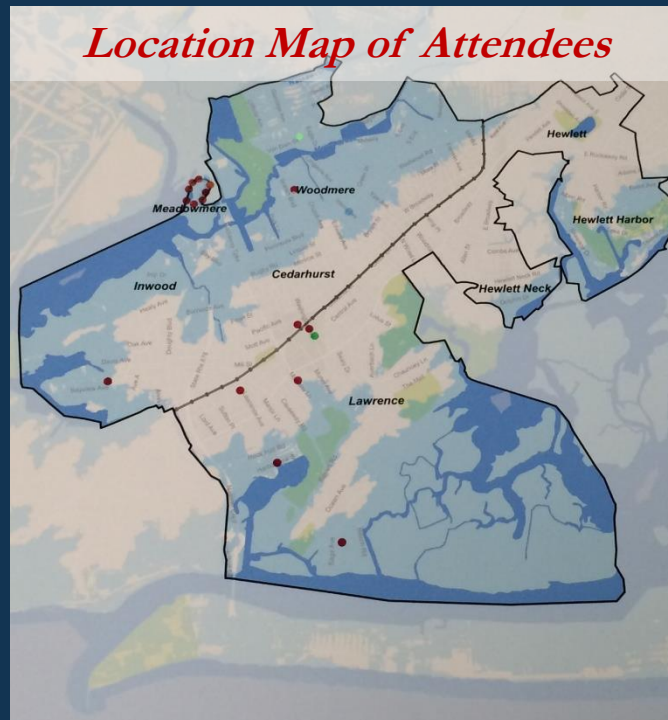
1. Vision Statement
2. Community Profile
3. Assessment of Risks & Needs
4. Preliminary Reconstruction Strategies
5. **Public Engagement**
6. Preliminary Implementation Structure

Public Engagement

- Site tours with representatives with each community
- Three Planning Committee meetings
- Two Public Workshops



Public Workshop #1: October 17



Public Workshop #2 – November 19, 2013



Public Workshop #1: October 17

WHAT WOULD YOU LIKE TO SEE IN 5 TOWNS' FUTURE?

○ Safety in case of future catastrophe

TRANSIT ORIENTED HOUSING for young adults

Bare blowing leaves & grass clippings from gardens that clog up drains! Yes!

Larger Sewer drainage. We have flooding even under heavy rains. Increase capacity of sewer pipes.

Provide Five Towns Community Center, Inc. with infrastructure to more effectively serve people in need. ex Generator capacity to light & warm the center. ex Increase "showers" capacity.

We want our old copper wire telephone service reinstated. Verizon will not repair copper wire equipment. We have no telephone service if there is no electricity for extended times.

WHAT DO YOU LOVE ABOUT 5 TOWNS?

People help each other - they care about one another.

• Sense of Community / shop local / stay local

Fishing ^{from} my back yard.

Quiet + Secure area to live. Less crime in Area Madame Park.

Nice place to bring up children - and send children. P.S. grandchildren

PROJECTS TO INCREASE RESILIENCE

① Mesivta Atares Yaakov (H.S.) ex Independent Power + Safe Zone in economic development corridor. Wide base. growing Natural Gas available for generators. Explains Solar Panel

② Lawrence Ave needs larger sewer drains. & more frequent cleaning from detritus

③ Meadow Lane Kentidge sewer poles builds up under normal, heavy rain

④ Meadowmere: Build a flood wall barrier around entire meadowmere perimeter including Motiva oil supply.

stormwater holding capacity (40' deep)



⑤ don't broken bulkheads replace as Meadowmere Community to TOT which can then replace bulkheads if attached to TOT pipe. Gov. has enacted waivers for NY SDEC enabling streamlining of bulkhead replacement.

NYRCR Conceptual Plan

1. Vision Statement
2. Community Profile
3. Assessment of Risks & Needs
4. Preliminary Reconstruction Strategies
5. Public Engagement
6. Preliminary Implementation Structure

Preliminary Implementation Structure

Next Steps

- Risk Assessment
- Understand Costs and Benefits
- Evaluate Projects
 - Timeframe
 - Funding Sources
 - Responsible Agency

Next Committee Meeting: December 10

Next Public Workshop: January 2014, date and location TBA

Community Reconstruction Plan

Roundtable Discussions

Stations: Reconstruction Strategies

1. **Strategy 1:** Increase the resilience to extreme weather in high risk coastal areas by addressing coastal protections and stormwater infrastructure.
2. **Strategy 2:** Increase the emergency response capacity of facilities on high ground by building on the strong network of civic, health and social service organizations in Five Towns.
3. **Strategy 3:** Improve access from high risk areas to high ground and regional connections to strengthen evacuation routes and contribute to economic development along key corridors.

Community Reconstruction (CR) Plan

We want your feedback!

1. Fill out a **Comment Form**
2. Visit the Community Reconstruction Program website to provide online feedback:
www.stormrecovery.ny.gov/community-reconstruction-program
3. Email Comments to: info@stormrecovery.ny.gov
4. Attend a future Five Towns **Planning Committee Meeting**
(next meeting is December 10th)
5. Attend future **Public Meetings**
(next meeting will be in January 2014)



New York Rising Community Reconstruction Program

Five Towns

Conceptual Plan

Public Workshop #2 November 19, 2013

