



Seaford / Wantagh
Community Reconstruction Plan
Public Engagement Event #3

Tuesday, February 25, 2014
7:00 PM



Welcome

Team

Planning Committee

- John Molloy, Co-Chair
- Ken Jacobsen, Co-Chair
- Frank Allaire
- Chris Brown
- Linda Dimonda
- Bill Field
- Charlie Milone
- George Von Glahn

Planning Team

- Provided by the state to assist the committee with preparing the plan*
- **Staff** from the Department of State and Department of Transportation
 - **Consultants**



Tonight's Presentation

1. Welcome
2. Overview of NY Rising Community Reconstruction Program (NYRCR)
3. Projects
 - Proposed Projects
 - Featured Projects
 - Additional Resiliency Recommendations
4. Open House – Learn, Rate, & Enhance

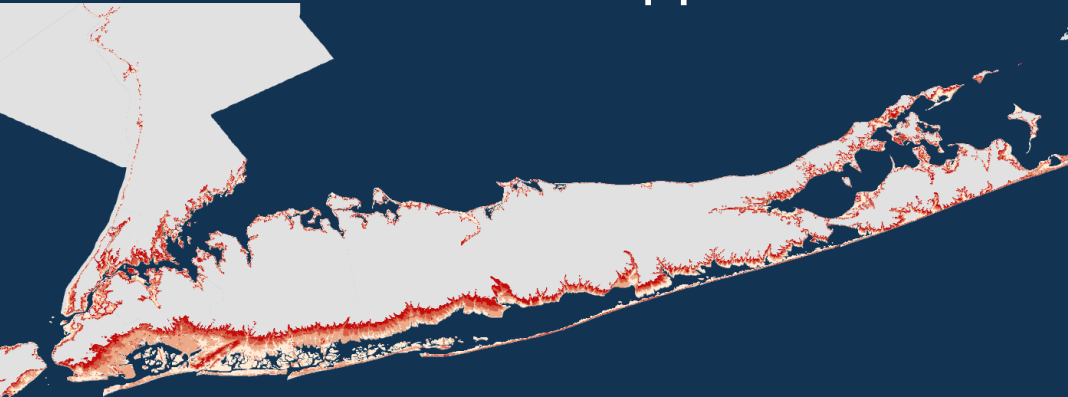




Overview of NYRCR Program

NY Rising Program

- Empowers localities severely damaged by Superstorm Sandy, Hurricane Irene, or Tropical Storm Lee
- Culminates in a community-driven recovery plan for Seaford/Wantagh:
 - Identifies resilient and innovative reconstruction projects
 - Considers current damage, future threats, and economic opportunities



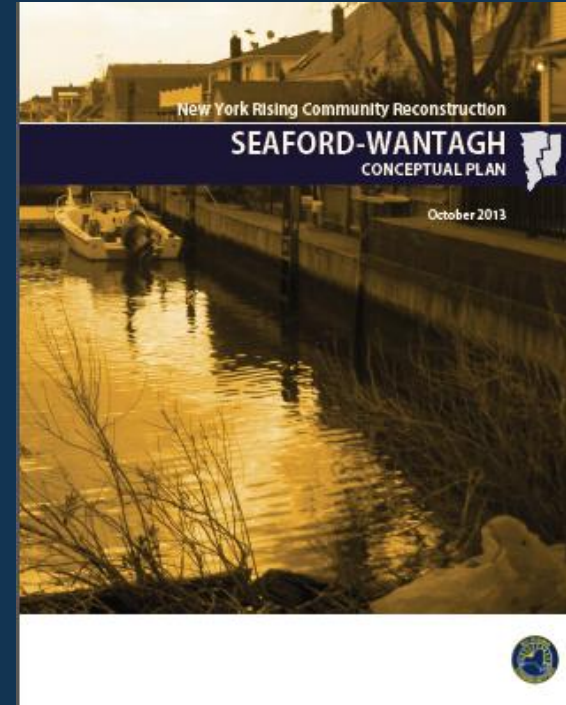
Program Process and Timeline

■ The NYRCR Program Timeline



Work Completed

- Conceptual Plan
 - Community Assets
 - Needs / Opportunities
 - Vision, Goals, Strategies
- Risk Assessment
- Project Development
- Cost-Benefit Analysis



http://stormrecovery.ny.gov/sites/default/files/crp/community/documents/seaford-wantagh_conceptual_plan_131114_final.pdf

Final NYRCR Plan



Addressing Recovery, Reconstruction, and Resiliency

1. Community Planning and Capacity Building
2. Economic Development
3. Health and Social Services
4. Housing
5. Infrastructure
6. Natural and Cultural Resources



Issues

- Communication and information dissemination
- Business continuity
- Coastal and inland flooding issues
- Cedar Creek WPCP



Approach to Projects

- Can't stop a major storm surge, but can reduce future damage and address tidal flooding
- Energy resiliency for every home could not be addressed within budget
 - BUT ensuring power at Community Resiliency Centers can
- Focus on life safety and improving access in and out of extreme risk areas
- Acknowledging need for better regional information about water systems and shoreline
 - Better inform future capital projects
- Supporting local business continuity
- Evaluate opportunities for commercial and residential uses on 'higher ground'



CDBG-DR Funding

- Funds have been allocated to Seaford / Wantagh for recovery efforts involving
 - prevent further damage
 - economic development
 - housing
 - infrastructure
- Funds may not duplicate, but can complement funding from other sources such as
 - FEMA
 - the Small Business Administration
 - the US Army Corps of Engineers



Project Definitions

- Proposed Projects
 - Proposed in whole or in part for the community's allocation of CDBG-DR funding
- Featured Projects
 - Meet CDBG-DR funding requirements but exceed allotment; are eligible for other identified funding; regulatory reforms; or do not involve capital expenditures
- Additional Resiliency Recommendations
 - Projects the Committee would like to highlight that are not included above





Projects

Seaford / Wantagh currently has...

- 17 Proposed Projects
- 7 Featured Projects
- 7 Additional Resiliency Recommendations

- \$11,240,099 CDBG-DR Allocated Funding
 - Seaford \$7,895,114
 - Wantagh \$3,344,985

*Posters around the room provide
details of these projects.*



Proposed Projects

- P1 – Tidal Check Valve Installation and/or Replacement
- P2 – TOH Bulkhead Replacement/Upgrade
- P3 – Priority Local Roads Stormwater Drainage Cleanout, Survey and Verification
- P4 – South of Merrick Rd Stormwater Drainage Cleanout, Survey and Verification
- P5 – Sunrise Highway, Merrick Road, Park Ave Drainage Improvements Study and Design



Proposed Projects

- P6 – Priority Local Roads Study and Design
- P7 – Priority Local Roads streetlight retrofit
- P8 – Seaford Wantagh Community Resource Centers
- P9 – Wantagh High School County Shelter Resilience Enhancement
- P10 – Cedar Creek WPCP Microgrid Detail Design
- P11 – Cedar Creek WPCP Hazard Mitigation Strategy



Proposed Projects

- P12 – Integrated Communication Network*
- P13 – Business Continuity Program*
- P14 – South Shore Stormwater System Modeling and Analysis*
- P15 – South Shore Shoreline Conditions Analysis and Restoration Program*
- P16 – Lifeline Transportation Network*
- P17 – Regional Energy Action Plan*

* = *Shared Project*



Featured Projects

- F1 – Sunrise Highway, Merrick Road, Park Ave Drainage Improvements
- F2 – Priority Local Road Improvements
- F3 – Wantagh High School and Seaford High School Solar PV and Battery Storage
- F4 – Wantagh Library and Seaford Library Solar PV and Battery Storage
- F5 – Revise zoning and building codes for resilience
- F6 – Improve resilience of community marinas
- F7 – Convert home heating to natural gas in extreme weather and high risk areas



Next Steps

- Update All Project Descriptions
- Incorporate Community Support for Projects



March 31, 2014 – Final NYRCR Plan

Public Engagement Event #4 – Plan Presentation





Open House:
Learn, Rate, and Enhance

Instructions

1. Visit each project poster
2. Share local knowledge by filling out Project Comment Cards
3. Complete your Participant Questionnaire
 - ✓ Rate each project high, medium, low
 - ✓ Indicate top five priorities
4. Share your priorities with sticky dots
5. Return your questionnaire as you leave



Project Posters

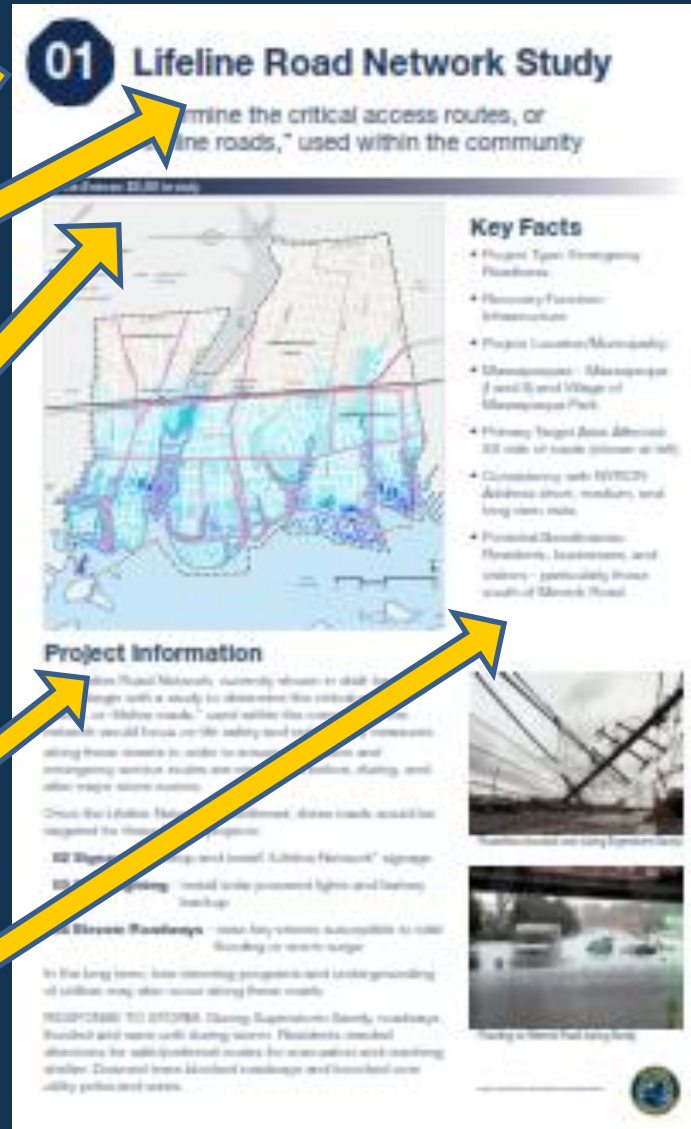
Project ID

Project Name

Cost Estimate

Project Information

Key Facts



01 Lifeline Road Network Study

Determine the critical access routes, or "lifeline roads," used within the community

Estimated Cost: \$2.0M to \$4.0M

Key Facts

- Project Type: Emergency Roadwork
- Primary Function: Stormwater
- Project Location: Municipality of Massapequa (Massapequa 2 and 3 and Village of Massapequa Park)
- Primary Target Area Affected: 22 miles of roads (between 400 ft)
- Consistency with NYSDOT: Address short, medium, and long term needs
- Potential Beneficiaries: Residents, businesses, and visitors - particularly those south of Glenn Road

Project Information

The Lifeline Road Network, currently shown in dark blue on the map, will be studied with a study to determine the critical access routes, or "lifeline roads," used within the community. The study will focus on the safety and reliability of these roads along these routes in order to ensure that emergency services are able to reach these routes, along with other major storm routes.

Over the Lifeline Road Network, several streets would be targeted for improvement:

- **22 Streets:** - will include "Lifeline Network" signage
- **10 Streets:** - will include improved lighting and drainage
- **10 Streets:** - will include improved drainage

Storm Resiliency: - will include improvements to road flooding in storm surge

In the long term, the ongoing program and understanding of utility may also occur along these roads.

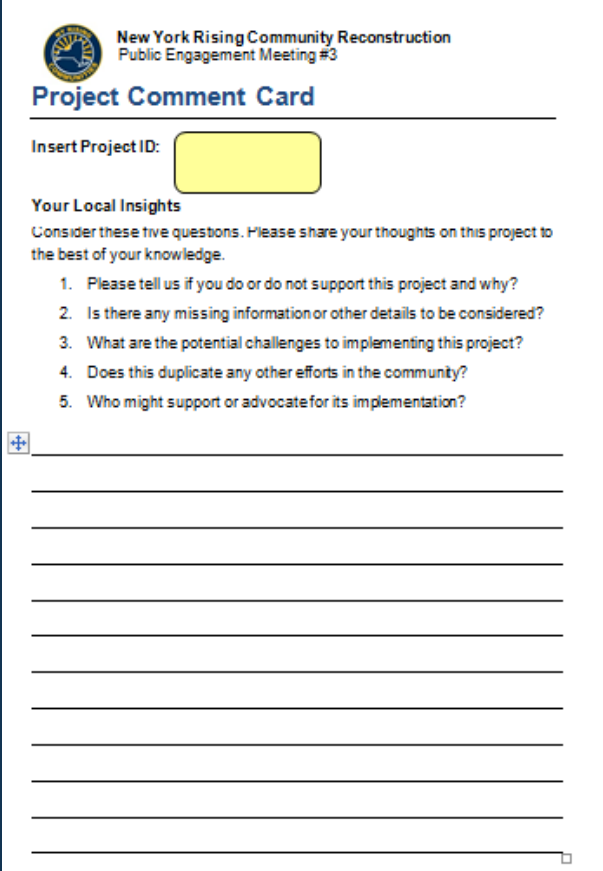
FOR MORE INFORMATION: Contact the Planning Department, Massapequa, New York, and visit our website: www.massapequa.com

FOR MORE INFORMATION: Contact the Planning Department, Massapequa, New York, and visit our website: www.massapequa.com




Project Comment Card

1. Insert Project ID
2. Provide your feedback
 - Support project and why
 - Missing information
 - Potential challenges to implementation
 - Any duplication
 - Who support or advocate
3. Return card at each station



The form is titled "Project Comment Card" and is part of the "New York Rising Community Reconstruction Public Engagement Meeting #3". It includes a logo for "NY RISING COMMUNITIES" at the top left. The form is divided into sections: "Insert Project ID:" with a yellow rectangular input box; "Your Local Insights" with a paragraph of instructions and a numbered list of five questions; and a section for handwritten responses with a small "+" icon and a series of horizontal lines.


 **New York Rising Community Reconstruction**
Public Engagement Meeting #3

Project Comment Card

Insert Project ID:

Your Local Insights
Consider these five questions. Please share your thoughts on this project to the best of your knowledge.

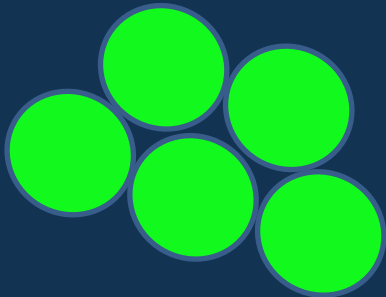
1. Please tell us if you do or do not support this project and why?
2. Is there any missing information or other details to be considered?
3. What are the potential challenges to implementing this project?
4. Does this duplicate any other efforts in the community?
5. Who might support or advocate for its implementation?

 _____



Rate & Rank

1. Complete the Participant Questionnaire rating each proposed & featured project
2. Select the 5 projects you believe are most important
 - ✓ Write projects on questionnaire
 - ✓ Post sticky dots on Prioritization Poster





Open House
Learn, Rate, and Enhance