



Rye

Community Reconstruction Plan Public Meeting #4

January 12, 2015 - 7:00 PM

Rye Free Reading Room, 1061 Boston Post Road
Rye, New York



Welcome and Introductions

Committee and Team

- Rye Committee
 - Bernie Althoff (Co-chair)
 - Holly Kennedy (Co-chair)
 - Mack Cunningham
 - Frank Gadaleta
 - Rex Gedney
 - Sara Goddard
 - Gregg Howells
 - Josh Nathan
 - Richard Runes
 - Tracy Stora
 - Birgit Townley
- Governor's Office of Storm Recovery
 - Suzanne Barclay
 - Alex Breinin
- Consultants (AKRF-Sasaki)
 - Program Lead, Nanette Bourne (AKRF)
 - Project Manager, Jason Hellendrung (Sasaki)
 - Assistant Project Manager, Julia Carlton (Sasaki)
 - Technical Advisor, Jim Nash (AKRF)



Meeting Overview

- Introduce the NYRCR Program
- NYRCR Plan for Rye
- Open House





NY Rising Community Reconstruction

NYRCR Program

- NY State established the NY Rising Community Reconstruction (NYRCR) Program with funds from the U.S. Department of Housing and Urban Development (HUD) Community Development Block Grant – Disaster Recovery (CDBG-DR) program.
- Community Planning Committees, Consultant Teams, and State Representatives are working together with the community to develop NYRCR Final Plans, to identify implementable projects, and to create resiliency to future storms events.
- Culminates in a community-driven recovery plan for Rye that:
 - Considers current damage, future threats, and economic opportunities
 - Identifies resilient and innovative reconstruction projects



NYRCR Process





An Informed Process

Engineering and Planning Reports

- Hydrologic and Hydraulic Analysis (Parsons Brinckerhoff 2014)
- Blind Brook Watershed Management Plan (USACE 2009)
- Hydrologic and Hydraulic Analysis of Bowman Ave Dam (Rizzo Engineering 2012)
- Flood Mitigation Study Bowman Avenue Dam Site (C. H. Sells Inc. 2008)
- Stormwater Reconnaissance Plan for the Coastal Long Island Sound Watershed (Westchester Co. Dept. of Planning 2013)
- Retaining Wall Replacement along Theodore Fremd Avenue at Blind Brook (WSP Sells 2009)



Public Outreach

- Public Engagement Events in July, September, November, and January
- Rye Nature Center Camp Youth Program
- Halloween Window Painting Information Table
- Online Project Survey (with 350 responses!)

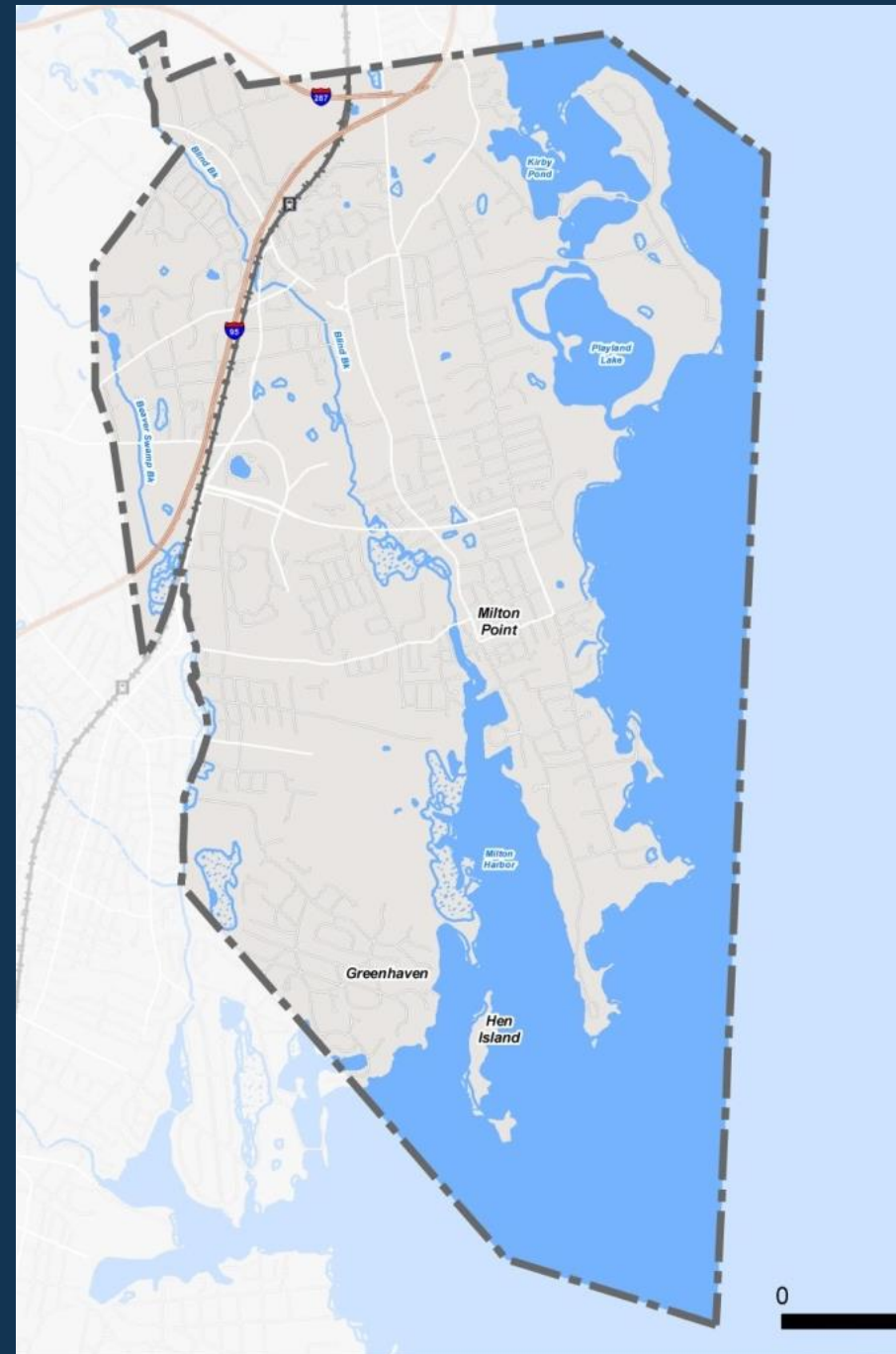




NYRCCR Plan for Rye

Geographic Scope

- The geographic scope of the NY Rising Community Reconstruction (NYRCR) Plan is coterminous with the City of Rye



Legend



Data Sources

City of Rye,
NYSITS,
Westchester County
August 2014

Storm Damage

- 2007 storms: Severe damage raised awareness
- 2011 storms (Irene and Lee): Riverine flood damage
- 2012 storms (Sandy): Wind and wave damage with extensive power loss



Rye YMCA Front Desk, Spring 2007



Shenorock Shore Club, October 2012



Critical Issues

- Increased frequency and intensity of flooding
- Stormwater and sanitary sewer systems
- Vulnerability of transportation and access
- Flooding of basement and living space of housing
- Vulnerable community services
- Power loss
- Insufficient watershed planning



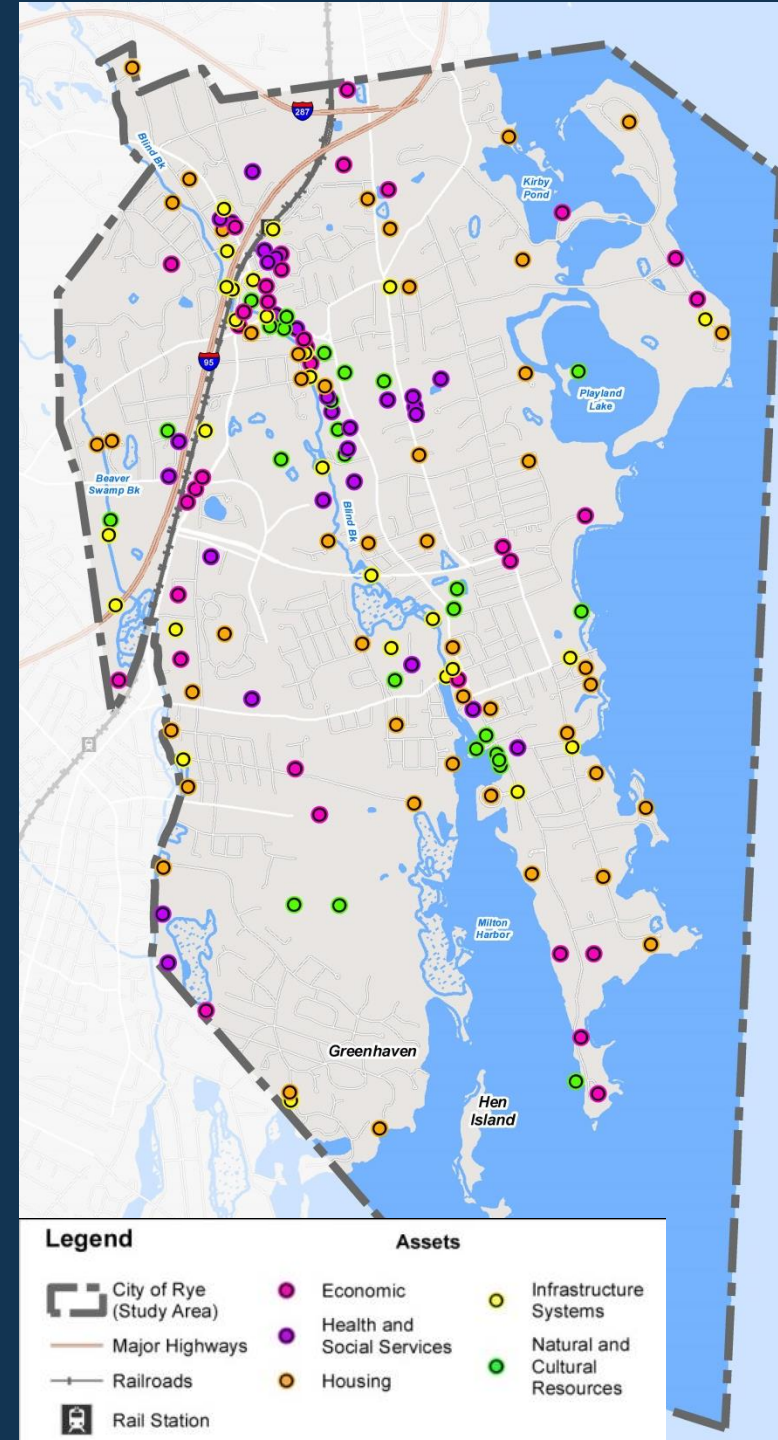
Vision Statement

“To preserve and improve Rye to ensure that the community remains economically and environmentally resilient and resistant to storms and floods.”



Identified Assets

- Identified and mapped assets and system components that provide **essential community functions** and are **proximate to known flood risk areas**
- Community assets and systems consist of **places, services, groups, or infrastructure networks**, and can be categorized into five Asset Classes:
 - Economic
 - Health and Social Services
 - Housing
 - Infrastructure Systems
 - Natural and Cultural Resources



Risk Assessment

- Measuring Risk Assessment is a **standardized process**, defined by the NYRCR program.
- An unmitigated Risk Assessment process evaluated the risk to assets from flooding.
- A mitigated Risk Assessment evaluated risk to assets after a project is implemented.

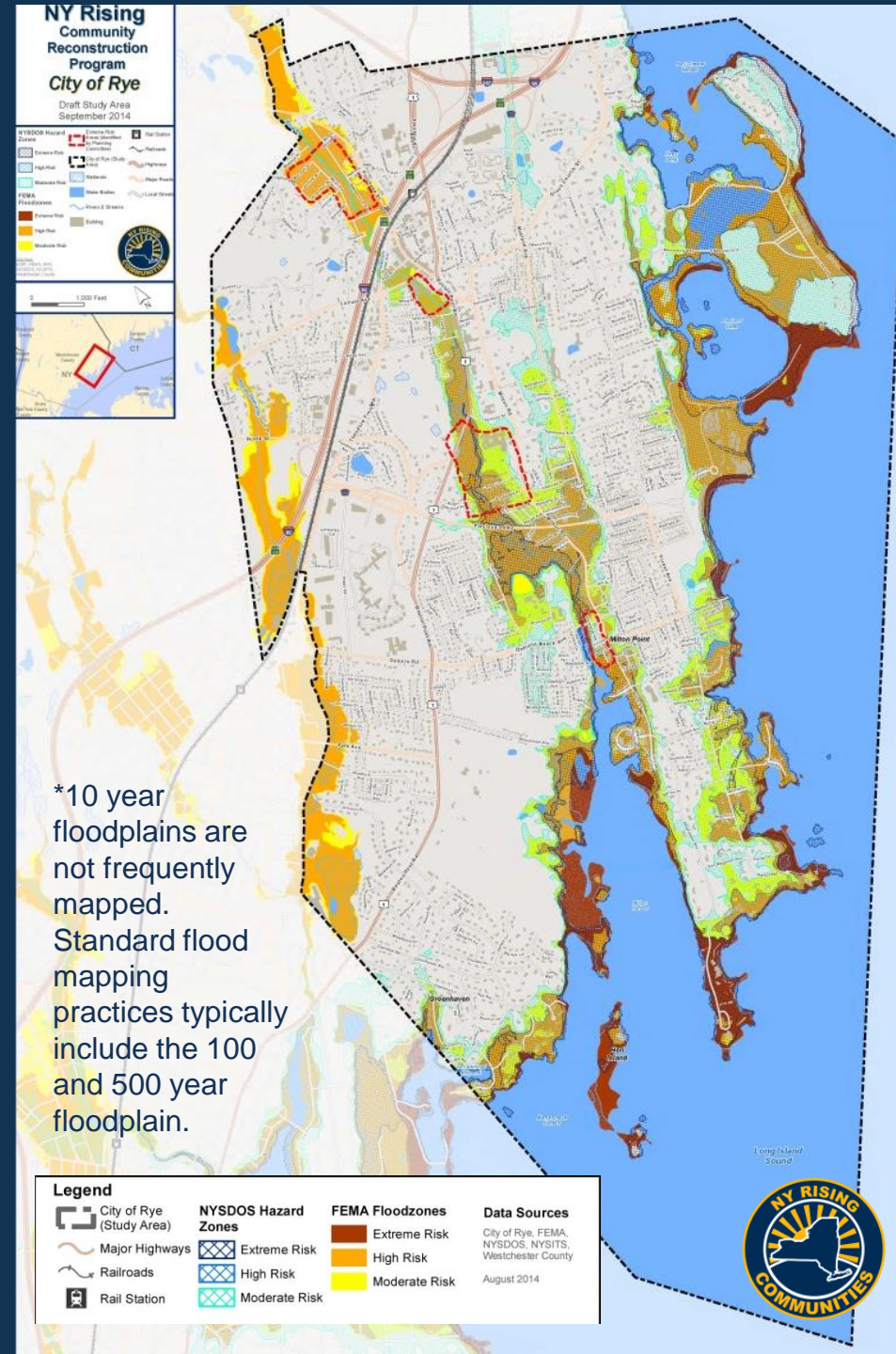


Exposure Areas

Risk Areas for exposure are based on FEMA mapping.

- **Extreme Risk Area:** The most frequently flooded areas, typically found in the **10-year floodplains**.*
- **High Risk Area:** The **100-year floodplains** encompass the High Risk Area, and are subject to a 1.0% chance of flooding on any given year. High Risk Areas are the most prevalent of the risk zones in the Rye planning area.
- **Moderate Risk Area:** The **500-year floodplains** encompass the Moderate Risk Area, and are subject to a 0.2% chance of flooding on any given year.

*10 year floodplains are not frequently mapped. Standard flood mapping practices typically include the 100 and 500 year floodplain.



Key Strategies for Storm Resilience & Resistance



Collaboration within the watershed to address riverine flooding at its source



Readiness for future storms



Infrastructure resilience



Design for sea level rise, coastal vulnerability, and tidal impacts

Projects

- **Proposed projects** are projects that can be funded with the Community's allotment of CDBG-DR assistance.
- **Featured projects** are innovative projects where an initial study or discrete first phase of the project is proposed for CDBG-DR funding or other funding resources.
- **Additional Resilience Recommendations** are resiliency projects and actions the Committee would like to highlight and are not categorized as Proposed or Featured Projects.
- The State has full discretion over the order of implementation, and can only fund up to \$3 million for Rye.



Proposed Projects

- Modifications to the Sluice Gate at the Bowman Avenue Dam
- Stormwater Ponds at Anderson Hill Road (SUNY Purchase)
- Bowman Avenue Dam Upper Pond Resizing
- Improved Milton Road Drainage to Harbor



Featured Projects

- Detention Basins at Westchester County Airport
- Bowman Avenue Dam Lower Pond Resizing
- New Entrance to the Rye Nature Center
- Floodproof the Locust Avenue Firehouse
- Designate Rye Golf Club as a City-Operated Emergency Center
- Floodproof Non-profit Facilities in the Central Business District



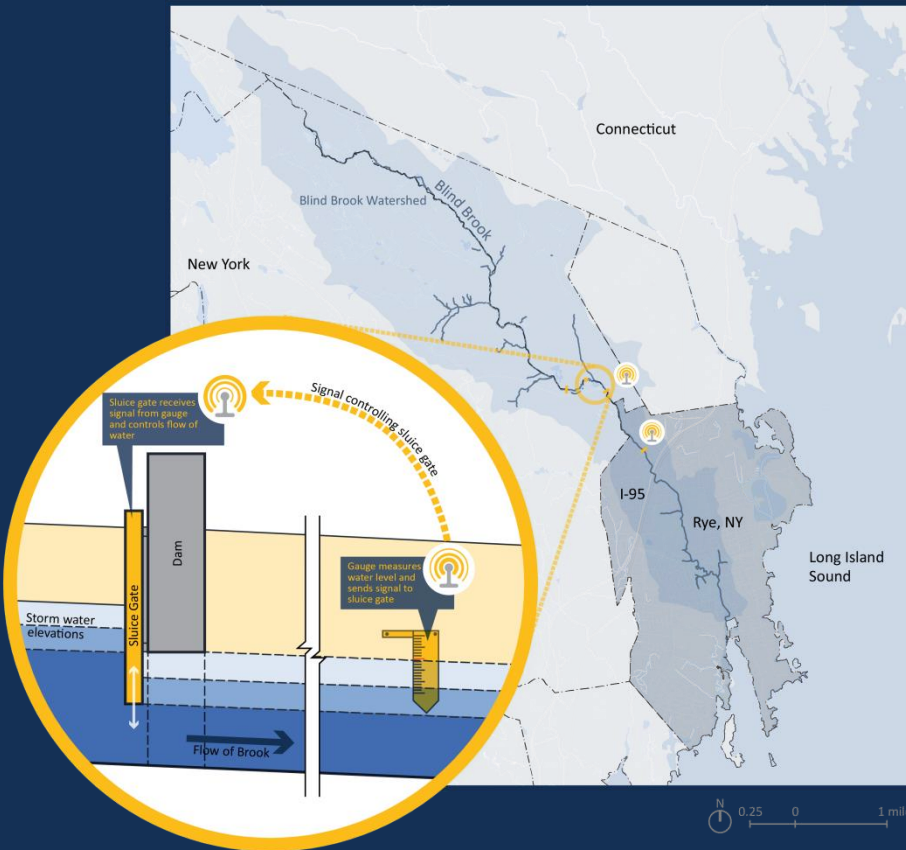
Additional Resilience Recommendations

- Stormwater Runoff Retention on Interstates Study
- Support Watershed Committee & Green Infrastructure Program
- Renewable Energy Program for the City of Rye
- Enrich and Expand the Wetlands and Open Space along City Brooks
- Power Line Stabilization Along Major Corridors Study
- Improve Municipal and Rye City School District Facilities
- FEMA's Community Rating System
- Coastal Zone

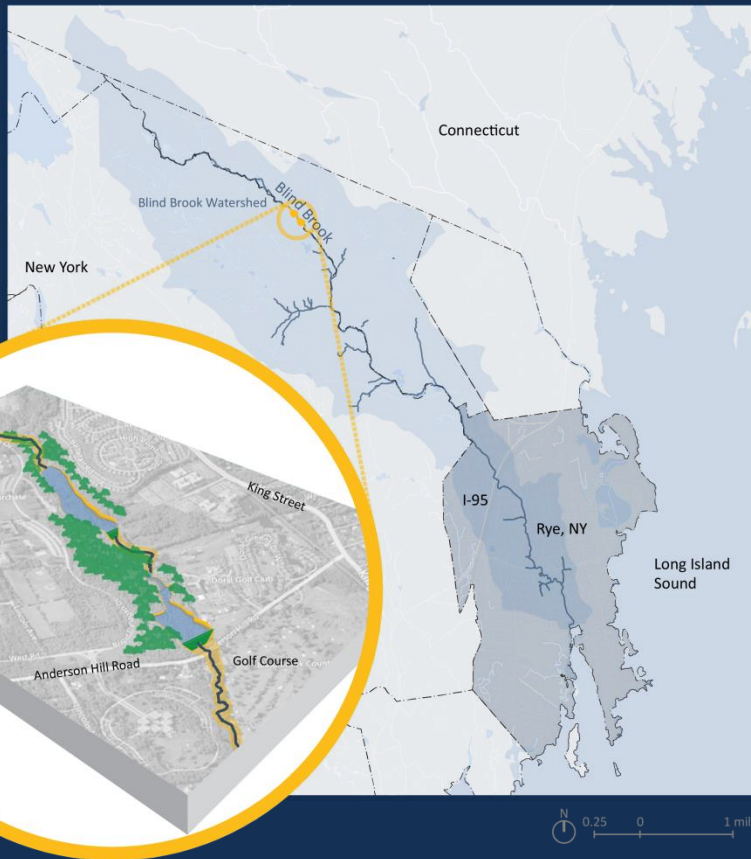


Modifications to the Sluice Gate at the Bowman Avenue Dam

- Stream gauges that send operational instructions to the sluice gate would be relocated to areas that will provide better stream flow readings, and the sluice gate's operational rules would be updated to decrease downstream flooding.



Stormwater Ponds at Anderson Hill Road (SUNY Purchase)

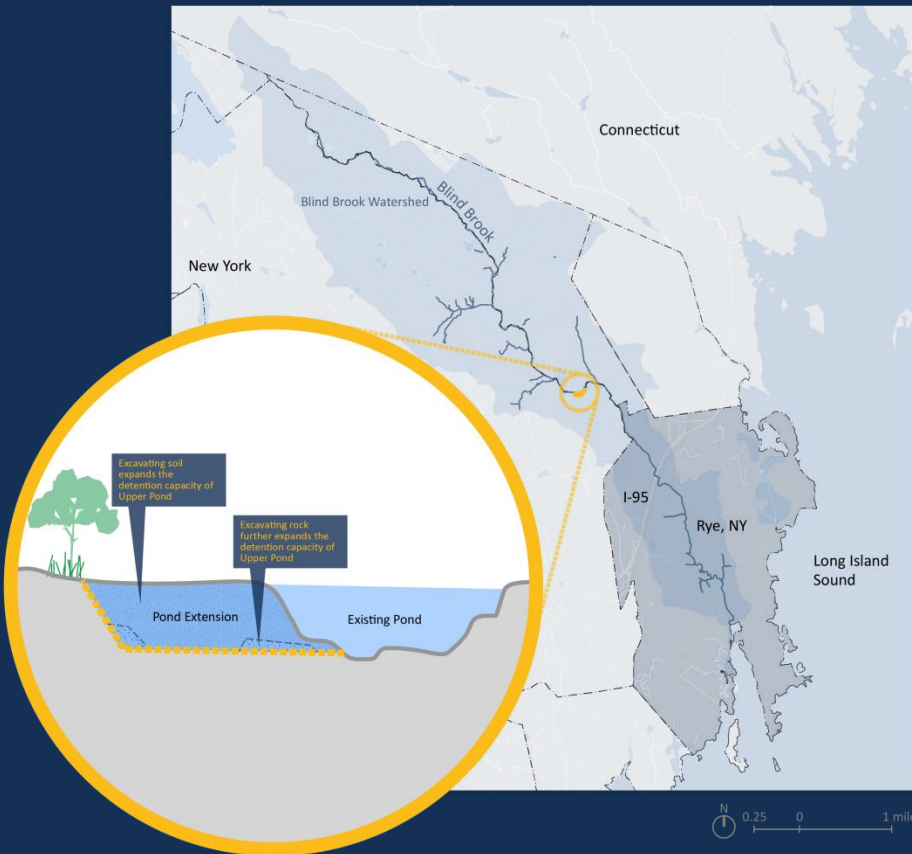


- Two stormwater ponds would be created by building two berms across the Blind Brook floodplain.
- During storm events, the berms would restrict water flow by forming detention ponds immediately upstream to store the water for slow release, reducing downstream flooding.

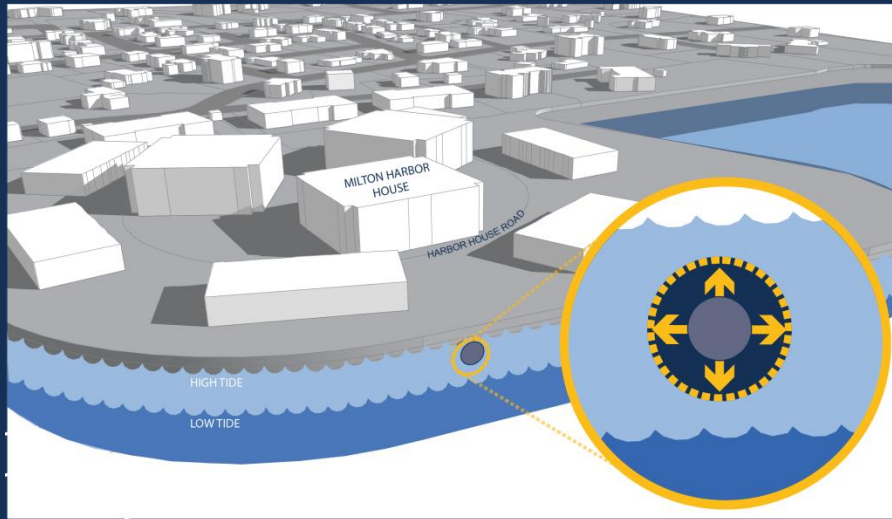


Bowman Avenue Dam Upper Pond Resizing

- The storage capacity of the Upper Pond at the Bowman Avenue Dam would be increased by excavating 104,000 cubic yards of material, in order to create a larger detention basin to reduce downstream flooding.



Improve Milton Road Drainage to Harbor



- Larger sewer pipes on Milton Road north of Milton Harbor House and a better tide gate at the Harbor would alleviate flooding of the Milton Harbor House property and improve the Milton Point Firehouse's ability to respond during emergencies.

Implementation

- Governor's Office of Storm Recovery (GOSR) staff will review **Proposed Projects** against CBDG-DR funding criteria and assist with completion of grant applications.
- Storm Recovery Office will meet with stakeholders and identify sub-recipients/entities that are best positioned to implement each specific **Proposed Project**.
- Implementation of **Proposed Projects** Begins
- Pursue Funding Sources for **Featured Projects** and **Additional Resiliency Recommendations**
 - Consolidated Funding Application
 - Other





Open House

What's Around the Room

- Steps in the NYRCR Process
- Rye Geographic Scope
- Map of Rye Community Assets and Risk
- Profiles of Proposed and Featured Projects
- List of Additional Resiliency Recommendations



Thank you!

- NY Rising website

The screenshot shows the homepage of the New York Rising Community Reconstruction Program. At the top, there is a navigation bar with 'New York State' and 'State Agencies' links, a search bar for 'Search all of NY.gov', and a Governor's seal for Andrew M. Cuomo. The main header features the 'NY RISING COMMUNITIES' logo and the title 'New York Rising Community Reconstruction Program (Formerly known as Community Reconstruction Zones)'. Below this is a 'TRANSLATE' button and a 'with bing' logo. A dark navigation bar contains links: HOME | REGIONS | MEETINGS | NEWS & ANNOUNCEMENTS | RESOURCES | FAQs | RECONSTRUCTION PLANS | STORM RECOVERY HOMEPAGE. The 'City of Rye' section is highlighted, showing three categories: 'News & Announcements - are forthcoming', 'Documents' (with a 'More +' button), and 'Committee' (with a 'More +' button). To the right of these are three large buttons: 'Get Involved', 'Facebook', and 'Contact' (with an envelope icon). A footnote at the bottom left states '* = non voting member'.

- Submit comments
- Follow on Facebook
- News & updates
- Final plan

www.stormrecovery.ny.gov/community-reconstruction-program

